

Geog 205 Project 2024 (25%)

The intent of the GEOG 205 project is to complete a map from data collection to finished product, maybe related to your program of study or areas of interest.

The project fills the last 3.5 weeks of the term lab periods.

We suggest you divide your time approximately as follows:

March 11-15: Data collection and assembly

March 18-22: Symbolisation and design

March 25-28: (no Friday lab) Layout and ancillary info

April 2-5: final report write-up

April 8-9: No labs, but finish up and submit by April 10

1. Type of Map

The project is **completely open** but you could use labs 4-6 as 'models' of the type of map you prefer to make e.g.

a. Qualitative thematic / location map

b. Thematic – quantitative (data may be harder to find)

c. Topographic

See following slides to view some previous project maps.

I've given them general 'A' or 'B' with some comments in red

General content may be helpful this week, and designs next week

2. Content ?

- **Personal interests** e.g. hiking, biking, dancing, dining
- **Home area or favourite travel location**
- **Related to your major study or other courses**
- **Wish you were there instead of here**
- **Place in the news**

3. Geographic area:

a. PG / BC

b. Other province

c. Other country

d. World / Other planet / other worlds ..

It could be anywhere / anything, but some data are easier to find

4. Scale / extent

... this determines the data to seek

a. Municipal (1:5k-10k)

b. Local (1:25k-50k)

c. Regional (1:250k-500k)

d. National (~ 1:1,000,000)

e. Global (~ 1:10,000,000)

5. Size and shape (plan ahead)

Online publishing could be any shape/size, but assume you'd like to print:

Size Options:

➤ **Tabloid 11 x 17"** - strongly recommended for best effect

Shape options

➤ **Landscape** (usually better, unless area is tall and narrow)

➤ **Portrait**

Square is less cool

B

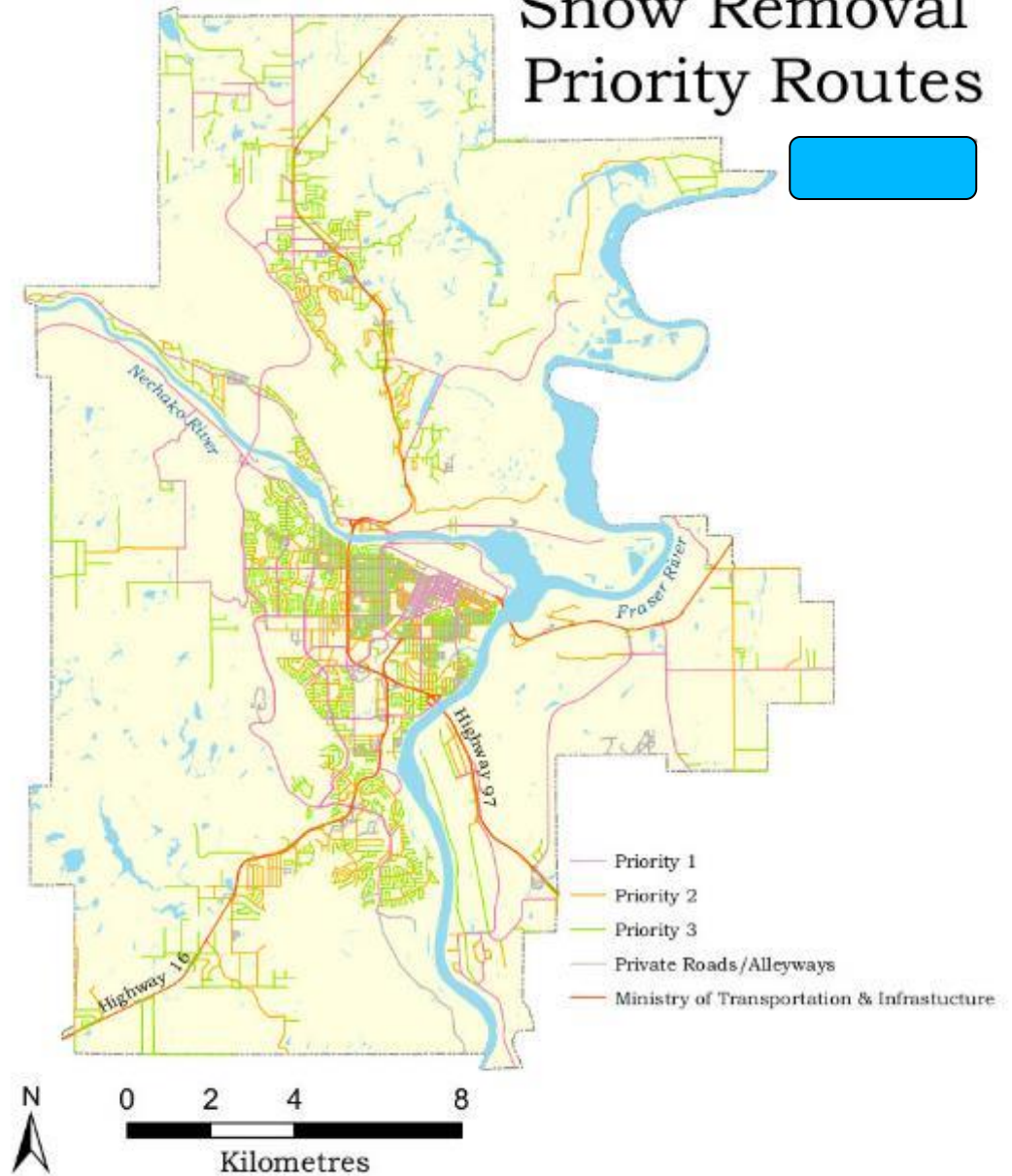
Location maps

‘general /
qualitative’

municipal

**way too much
white space, not
enough labels*

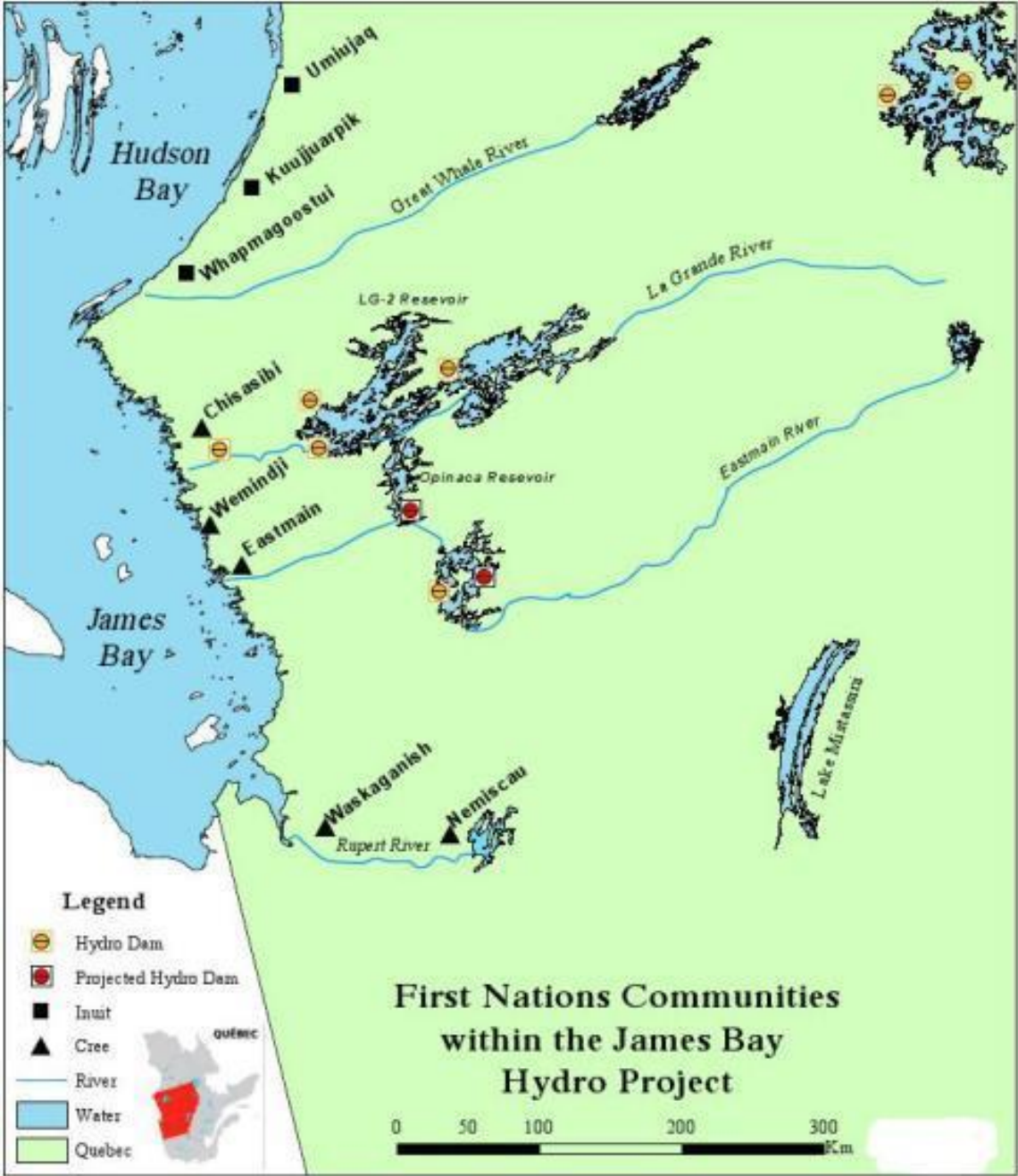
Prince George Snow Removal Priority Routes

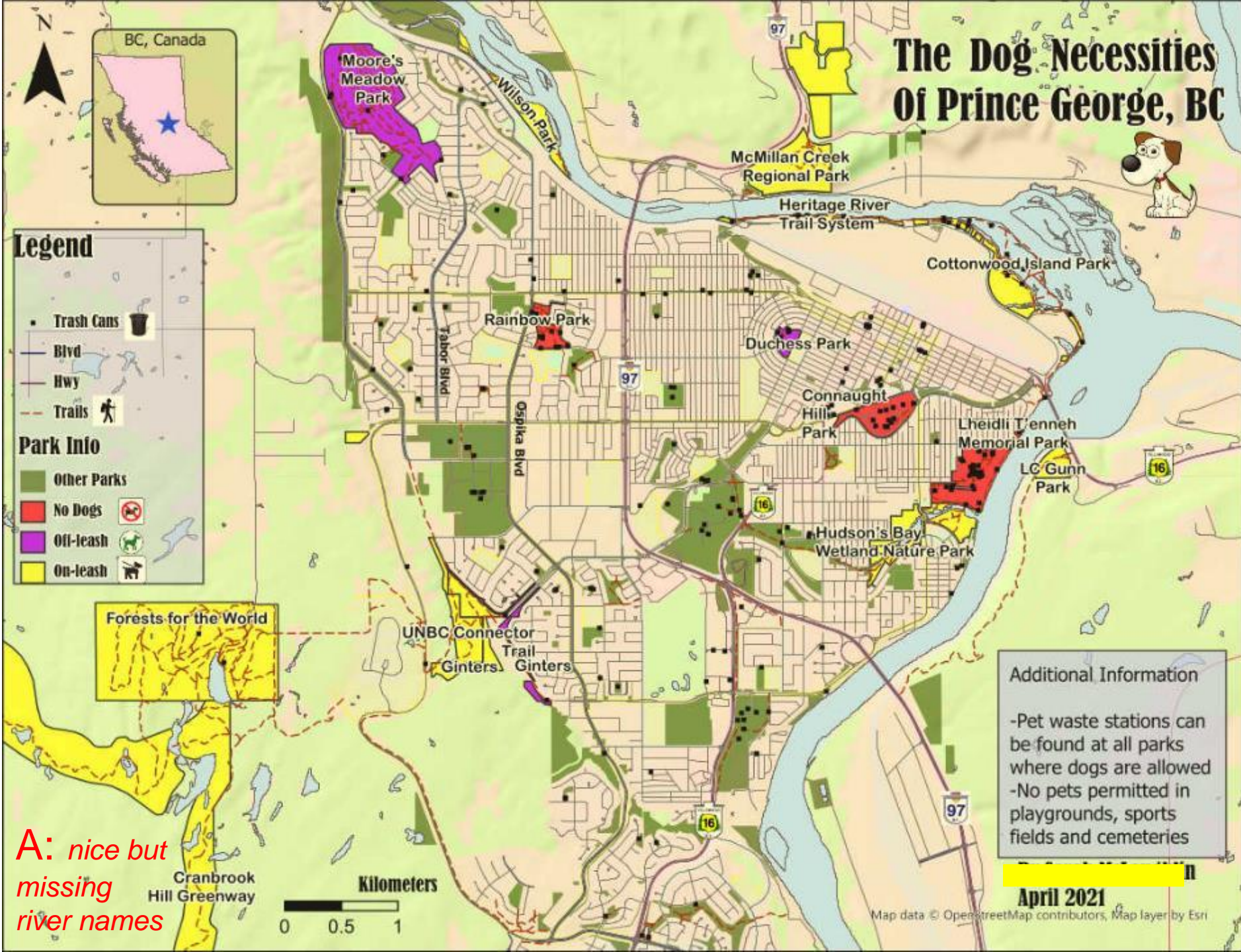


B

Regional

** Lakes too detailed
and attract attention
River and water
names not in blue*





A : good area of local interest, a few minor issues e.g. Beaumont PP label position

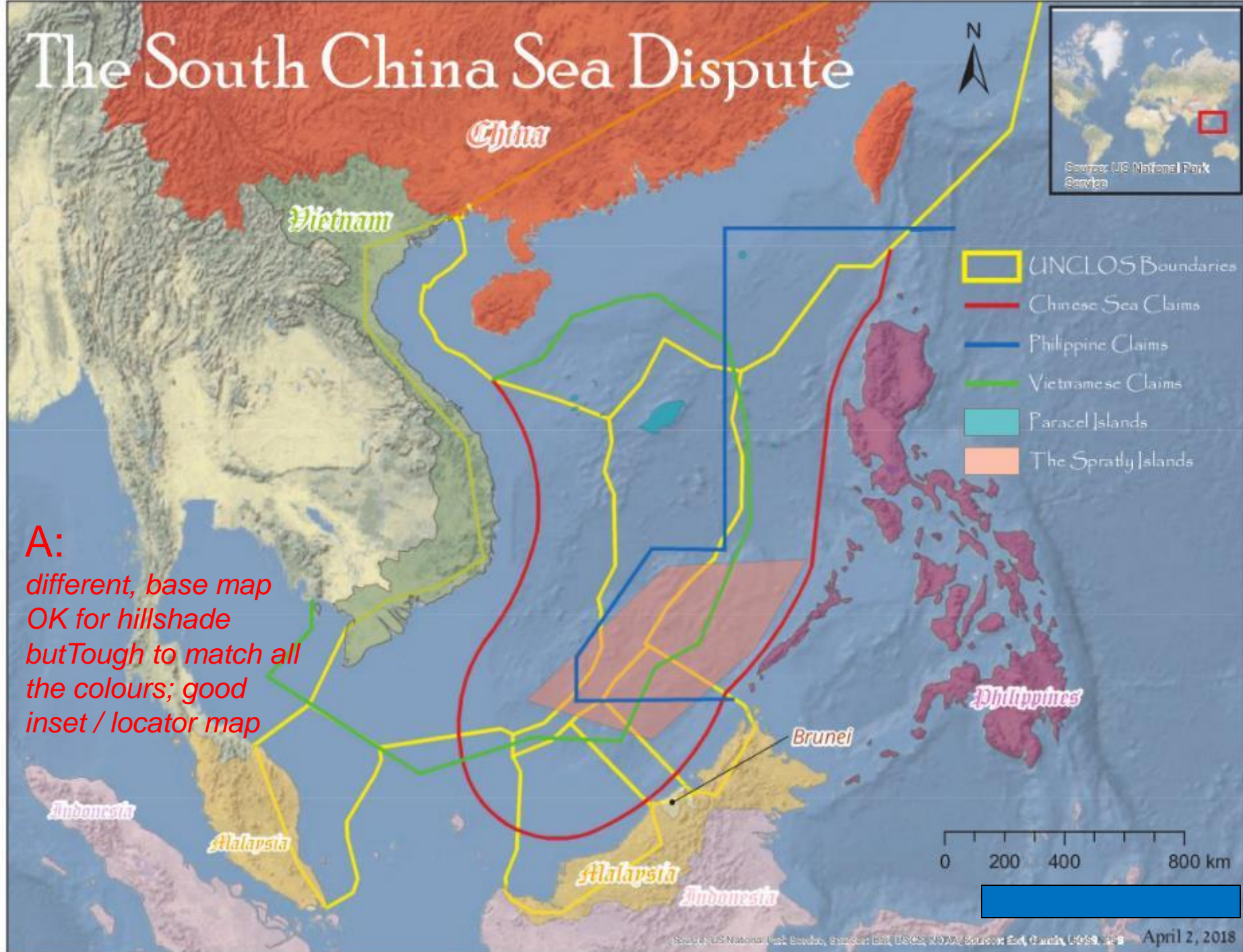
Fraser Lake: Sightseeing and Activities

Go exploring!

Hop on the side by side and go for a ride. Or, ask Doug for one of his lake tours on a seadoo. If you're lucky, your vehicle won't even break down on you.



The South China Sea Dispute

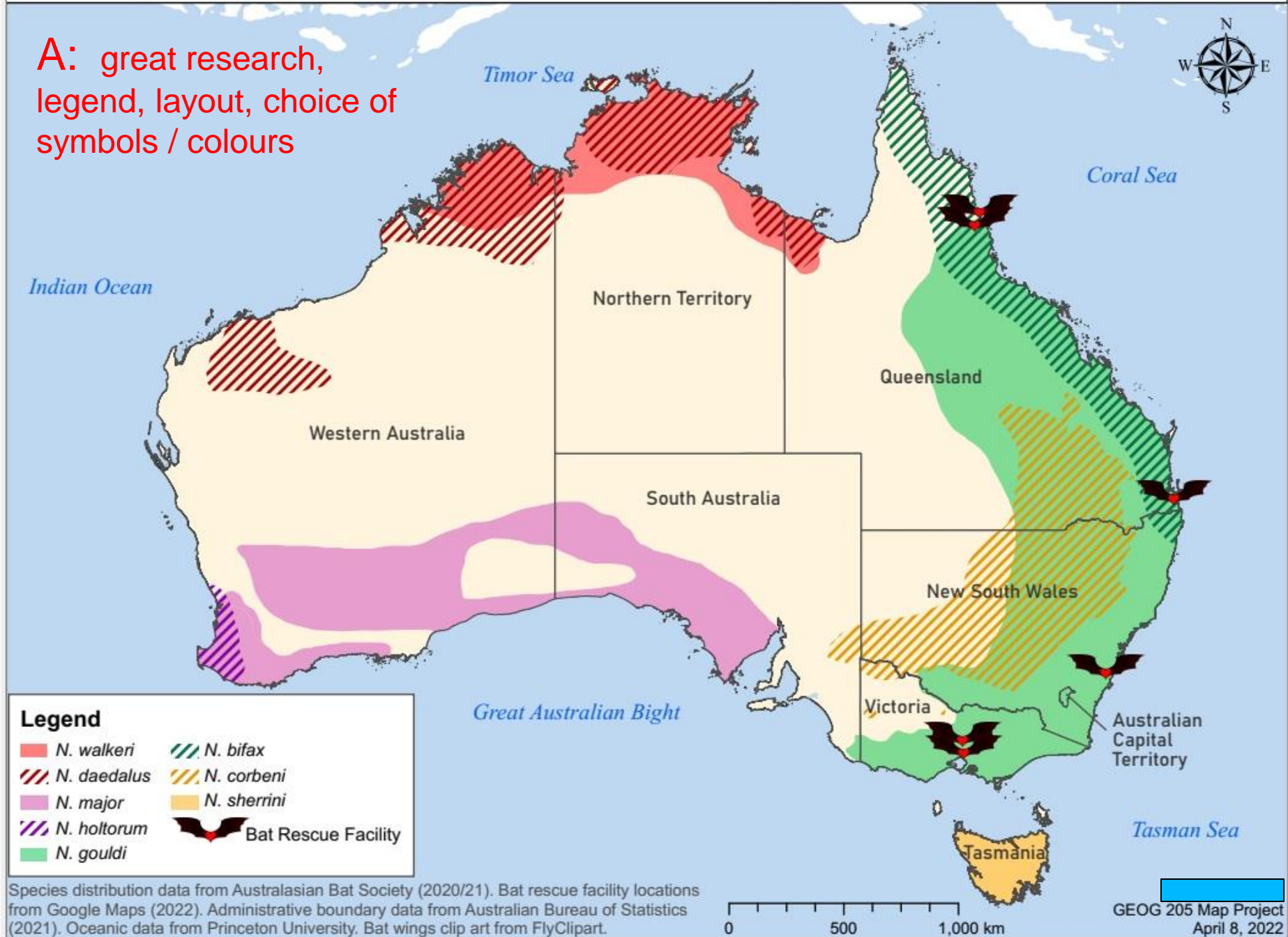


A:

different, base map
OK for hillshade
but Tough to match all
the colours; good
inset / locator map

Distribution of big-eared bats (*Nyctophilus* spp.) and bat rescue facilities in Australia

A: great research,
legend, layout, choice of
symbols / colours



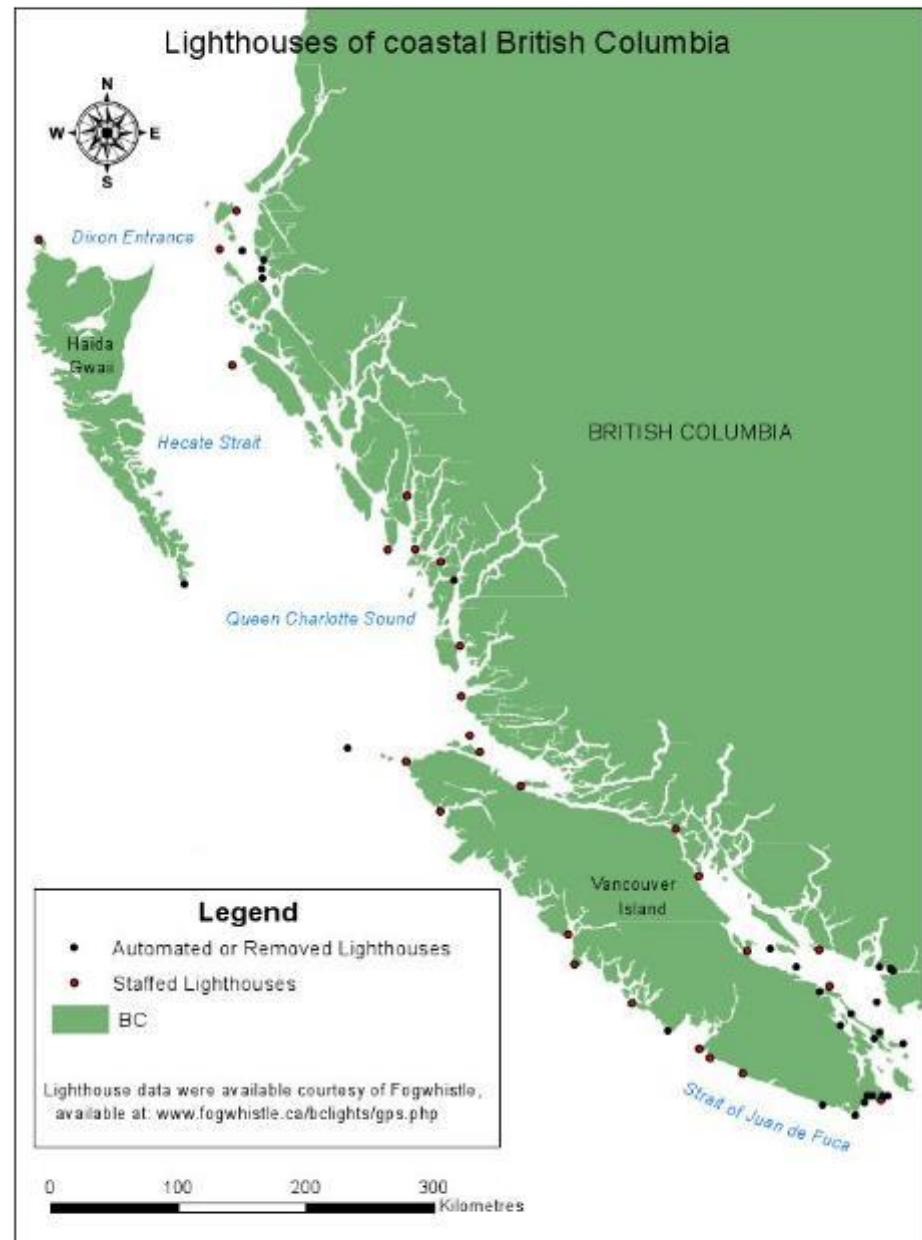
Thematic

Quantitative

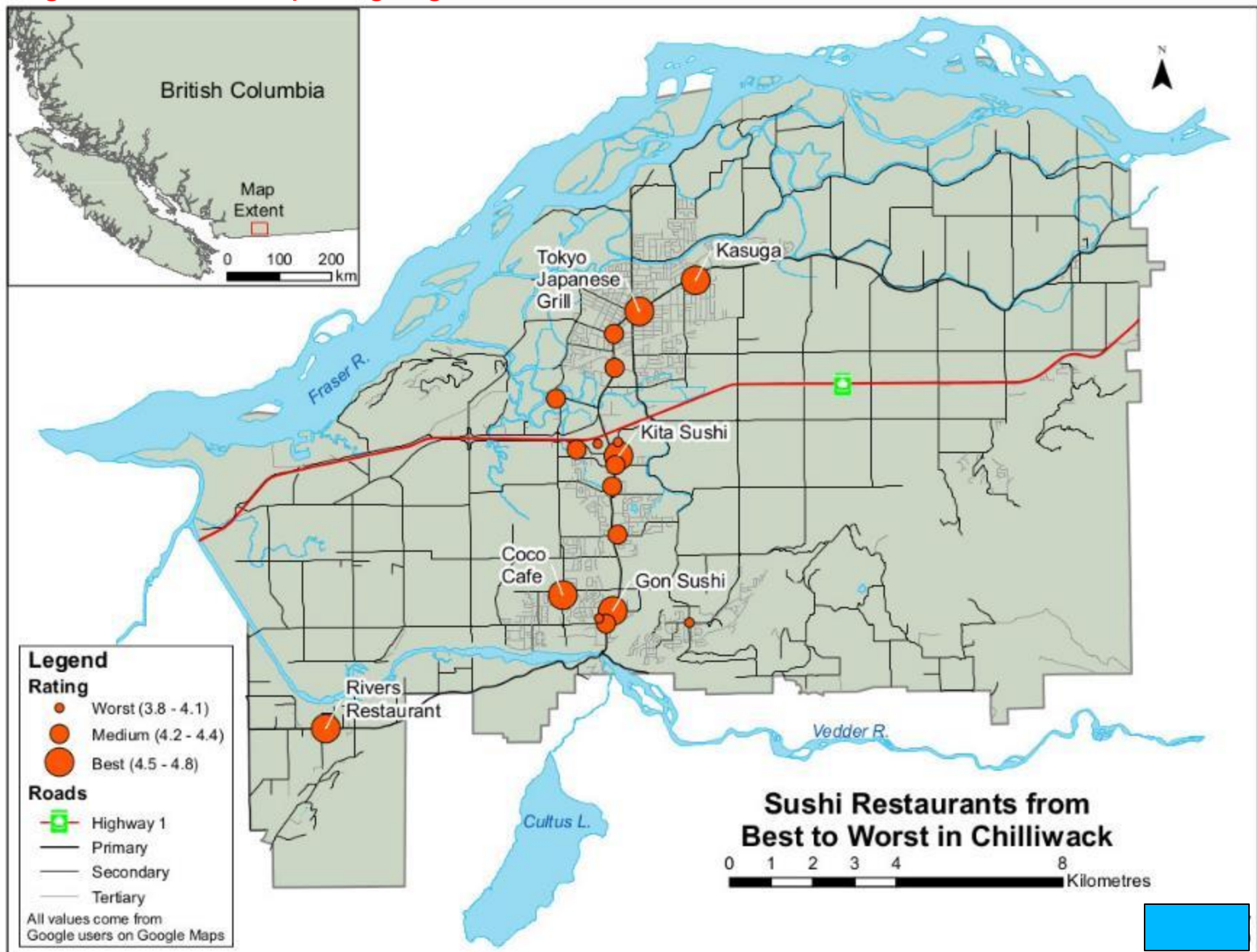
‘Dot map’

Regional

A: *good theme, needs a bit more – more land details, villages, maybe a bigger symbol – can't easily see two types*



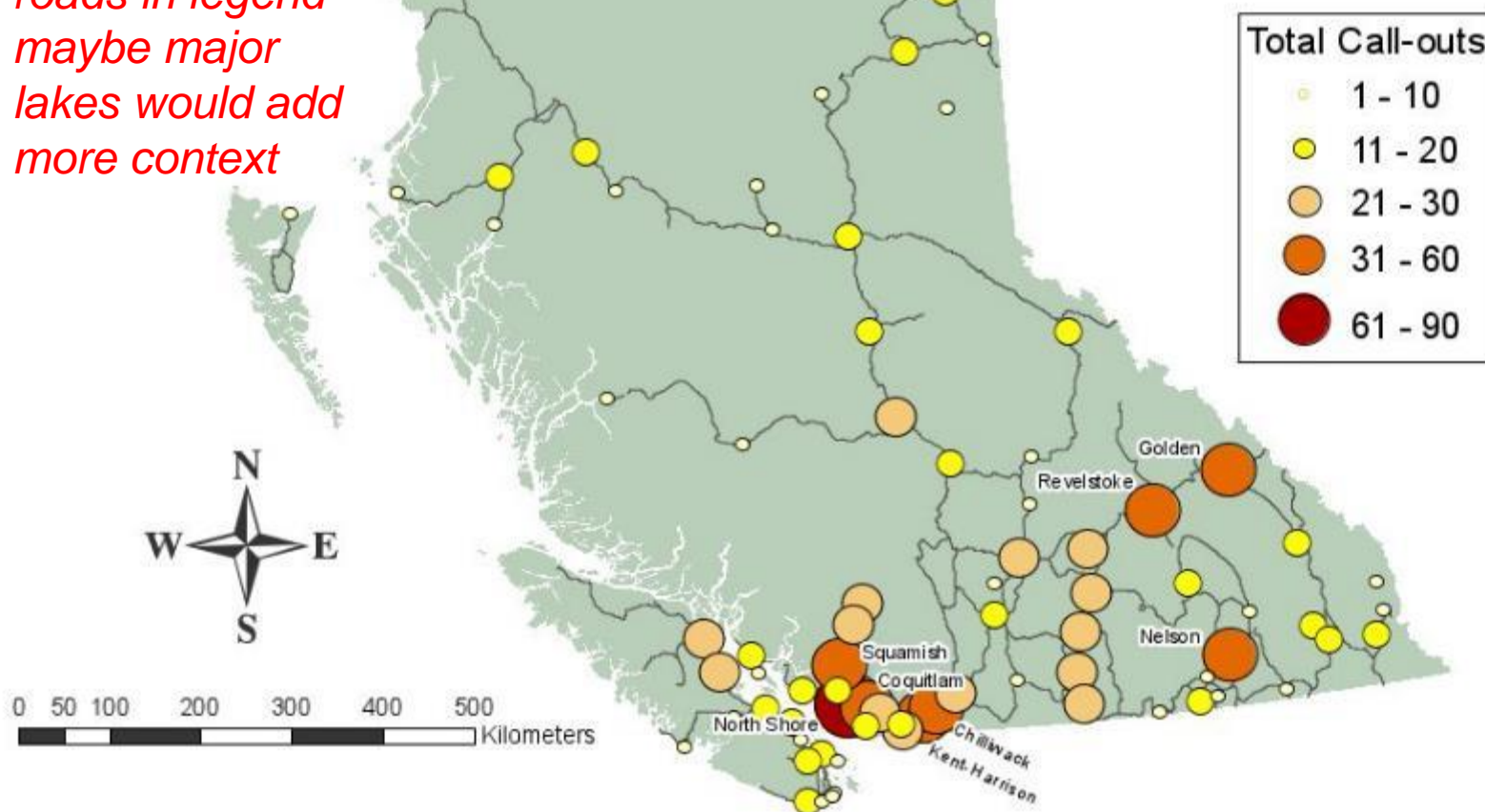
B: good idea to acquire google data; solid effort



A: good thematic map well thought out, needs a bit more e.g. more labels; missed roads in legend – maybe major lakes would add more context

Search and Rescue in BC (2009)

Total Call Volume by Municipal Groups



Call-out Volume Data retrieved from 2009 yearly incident reports.

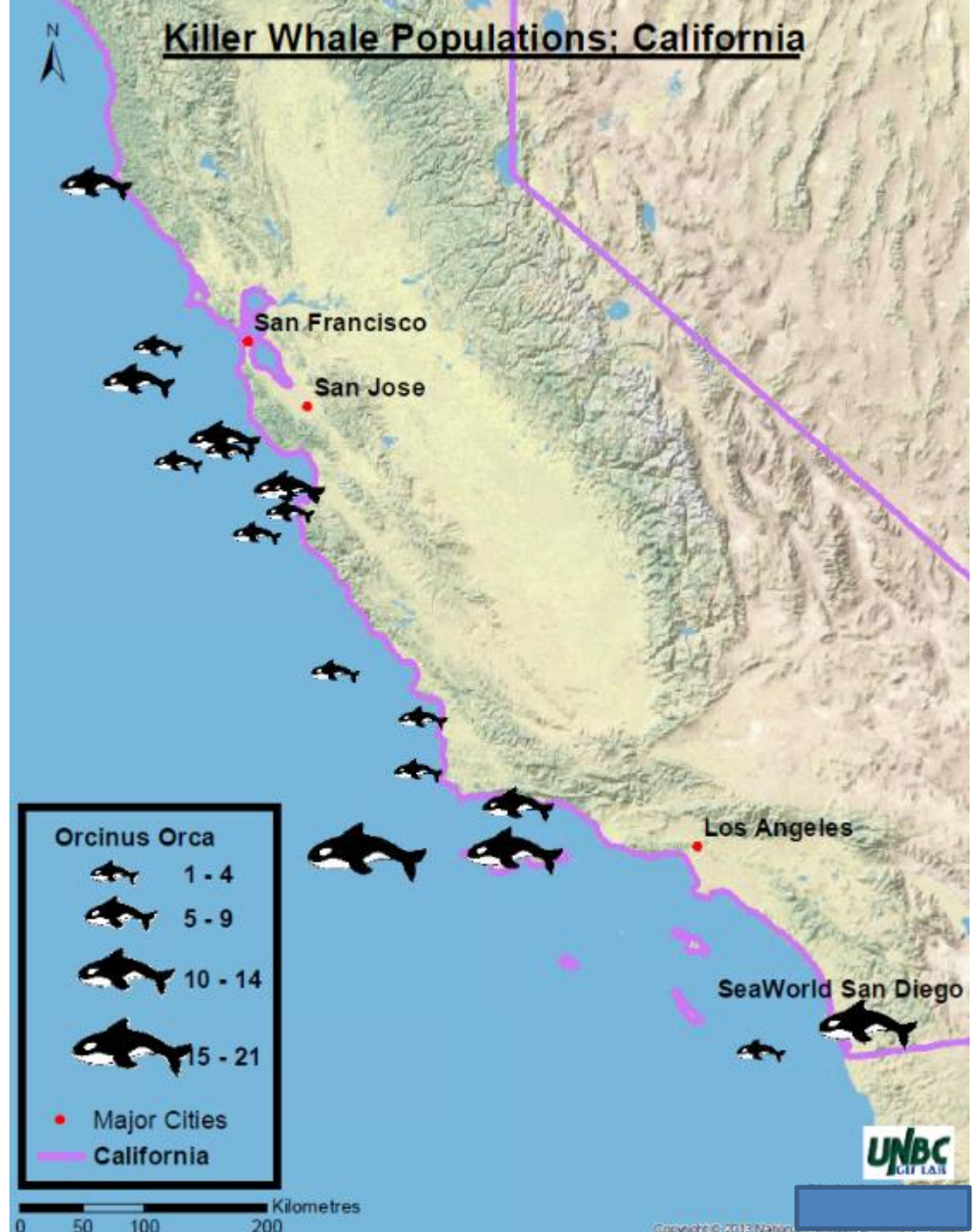
Provincial Emergency Program. (2010). Weekly Incident Summaries - 2009[Data file]. Retrieved from <http://www.pep.bc.ca/incidents/index-2009.html>

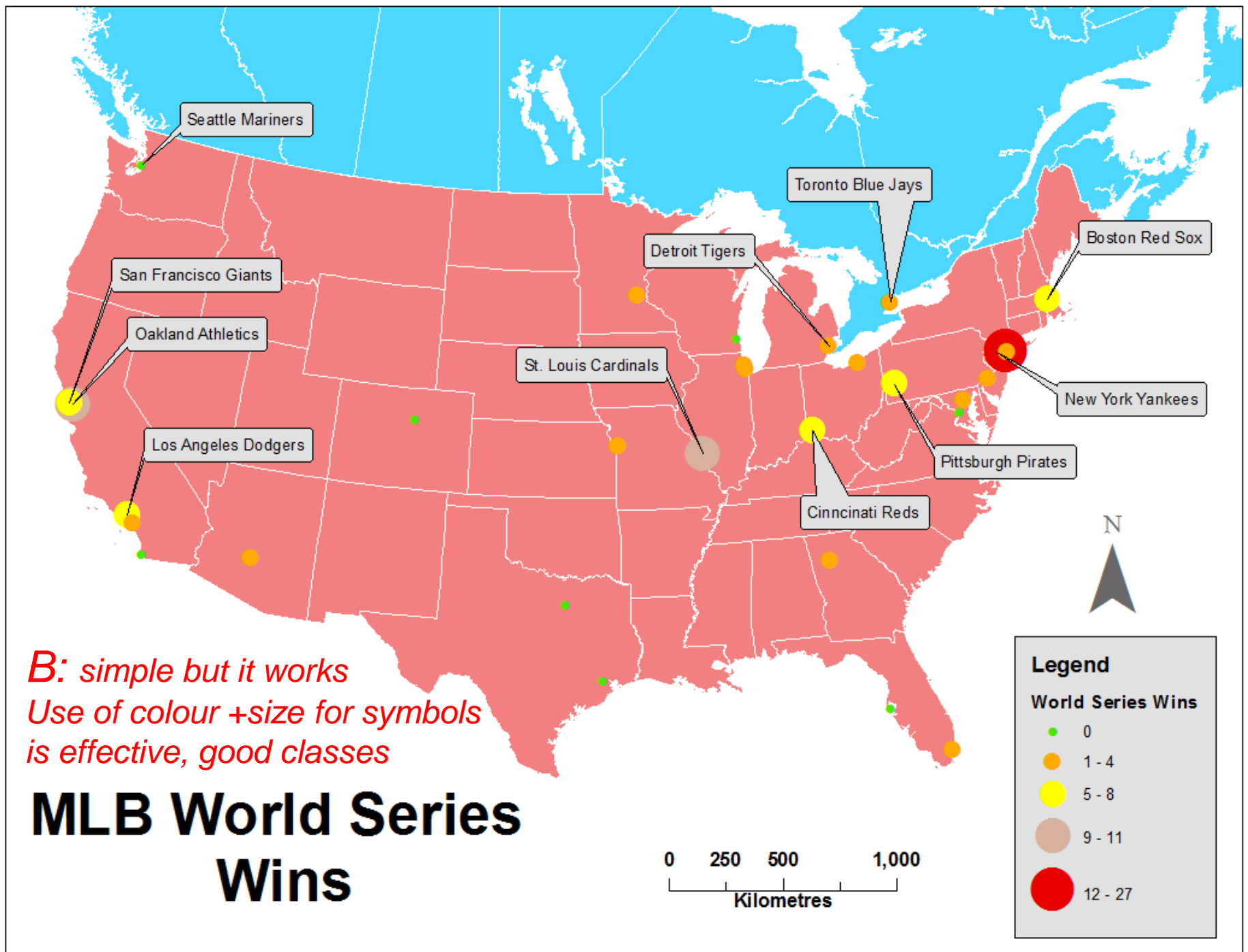
Thematic: quantitative

‘Graduated Orcas’

Background terrain from
ArcGIS online

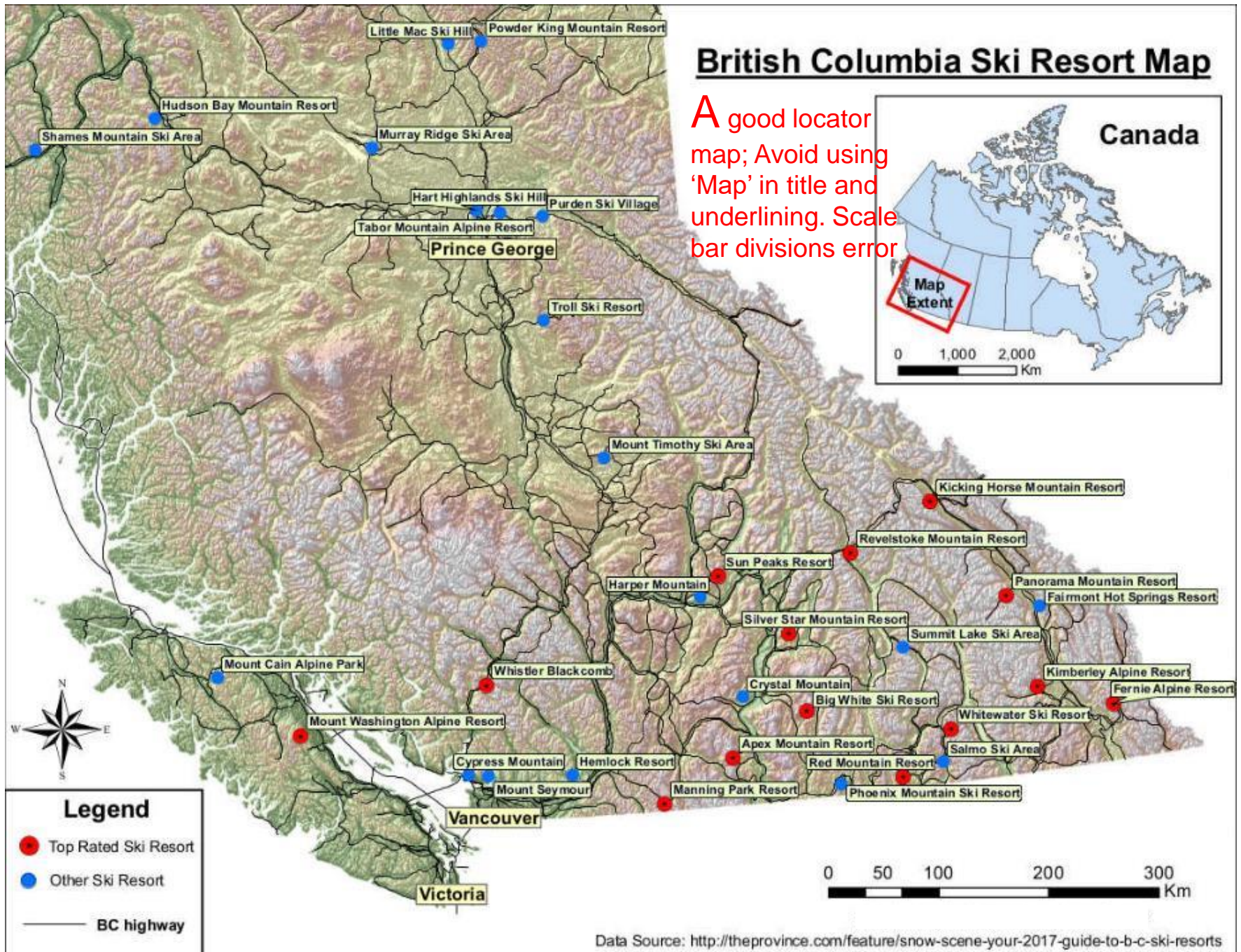
*B: great symbols, scale
bar cramped despite
having lots of space. Don't
underline titles – make it
bigger or upper case.
Move whale to show San
Diego location.*





British Columbia Ski Resort Map

A good locator map; Avoid using 'Map' in title and underlining. Scale bar divisions error



Hot Springs of BC

Ordered by Road Distance from Prince George

Legend

BC Highways

— BC Highways

Hot Springs

- 1 - Mount Layton Hot Springs
- 2 - Tsek Hot Springs
- 3 - Weewanie Hot Springs
- 4 - Bishop Bay Hot Springs
- 5 - Shearwater Hot Springs
- 6 - Mount Cayley Hot Springs
- 7 - Harrison Hot Springs
- 8 - Sloquet Hot Springs
- 9 - Keyhole Hot Springs
- 10 - Prophet River Hot Springs
- 11 - Frizzell Hot Springs
- 12 - Eucott Bay Hot Springs
- 13 - Radium Hot Springs
- 14 - Albert Canyon Hot Springs
- 15 - Fairmont Hot Springs
- 16 - Talheo Hot Springs
- 17 - Choquette Hot Springs
- 18 - Octopus Creek Hot springs
- 19 - Iskut River Hot Springs
- 20 - Lussier Hot Springs
- 21 - Buhl Creek Hot Springs
- 22 - Nakusp Hot Springs
- 23 - Ram Creek Hot Springs
- 24 - HotSpring Island
- 25 - Ainsworth Hot Springs
- 26 - Toad River Hot Springs
- 27 - Hot Springs Cove
- 28 - Liard Hot Springs

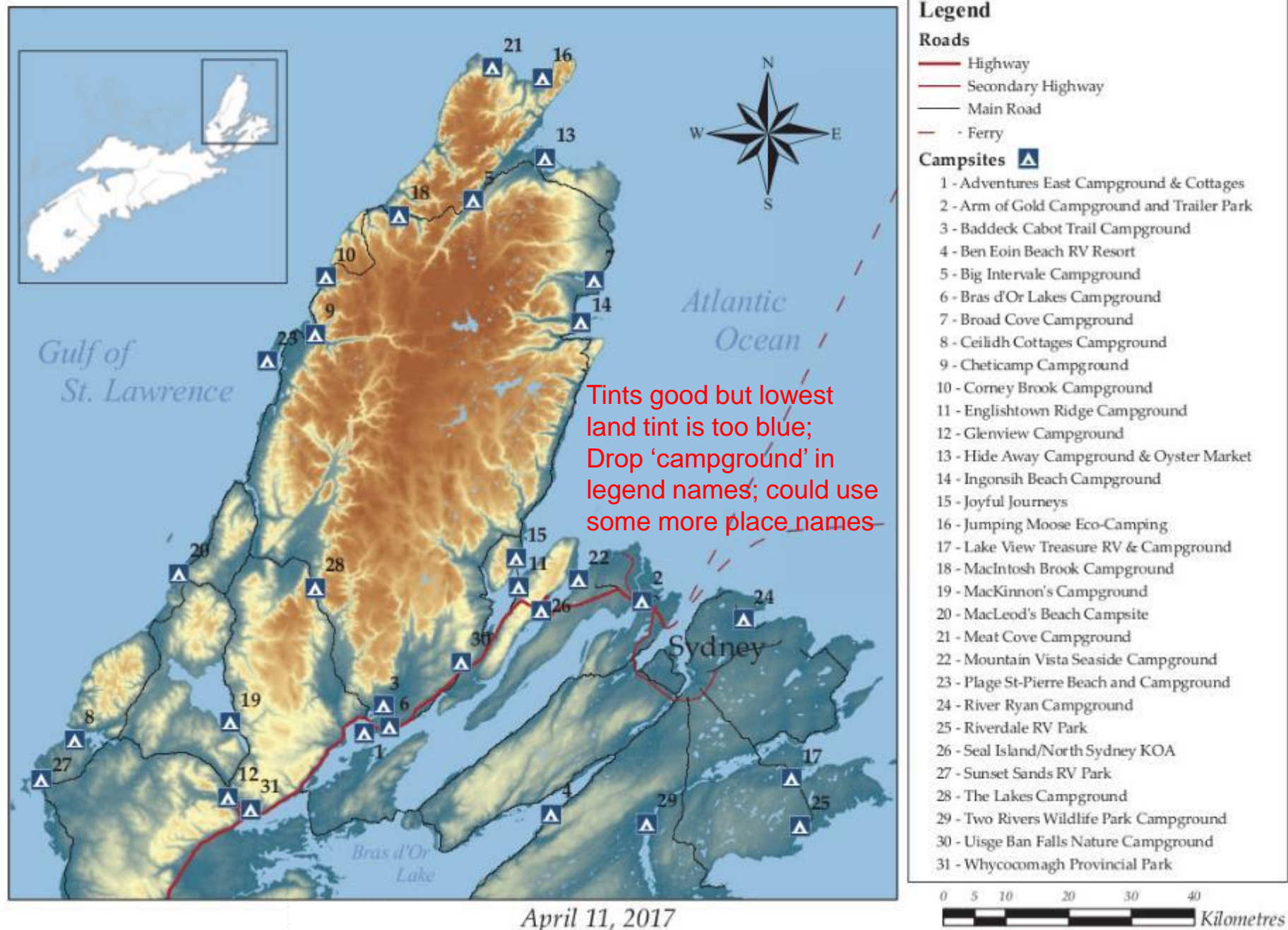
A Good theme.
Roads are not all
highways, and
don't need it twice
in legend. Drop
'Hot Springs'
repeat in legend –
it's in the title ..



0 125 250 500
Kilometres

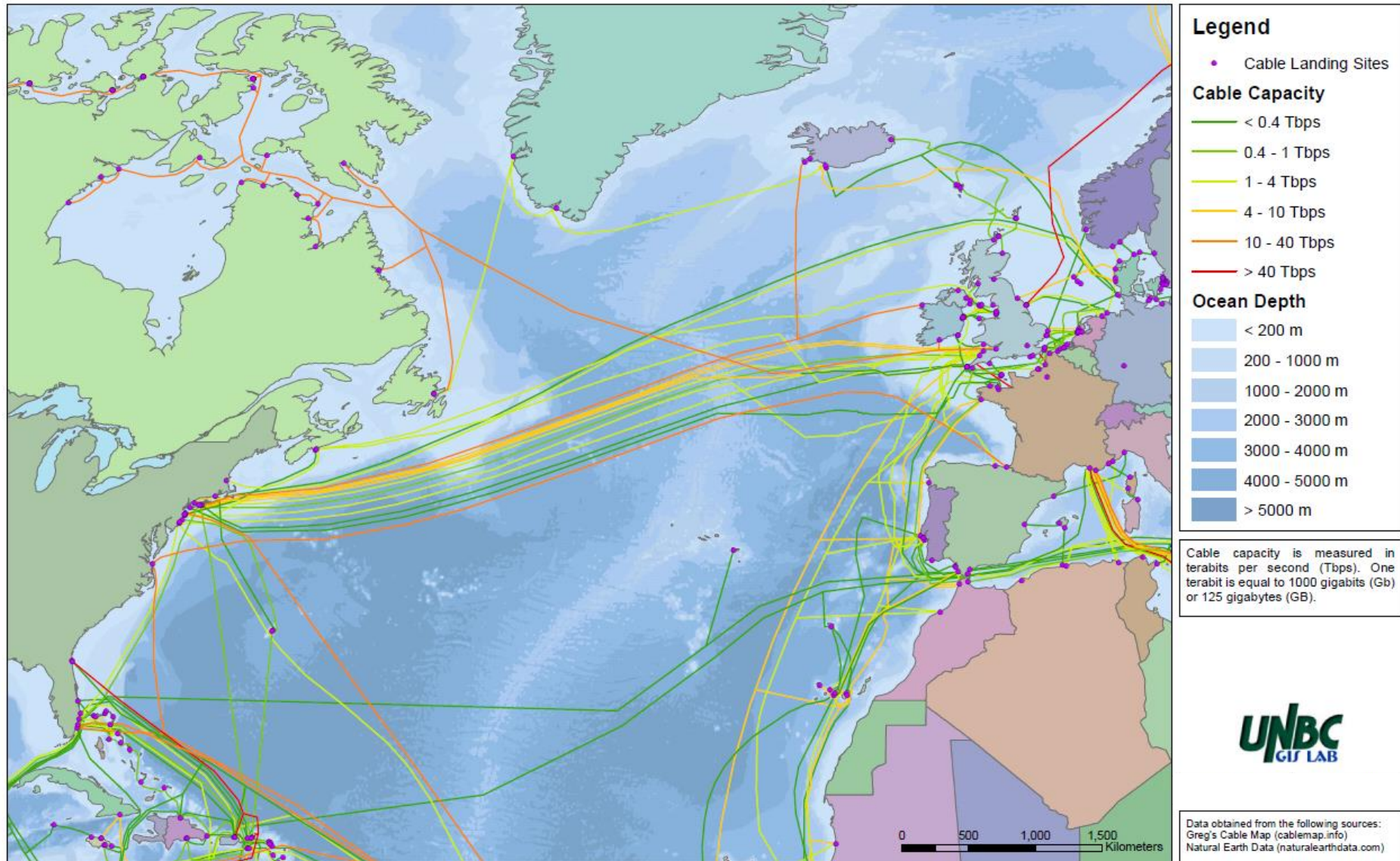
A

Campgrounds of Cape Breton Island, Nova Scotia



A

Undersea Communication Infrastructure in the Northern Atlantic Ocean (2015)

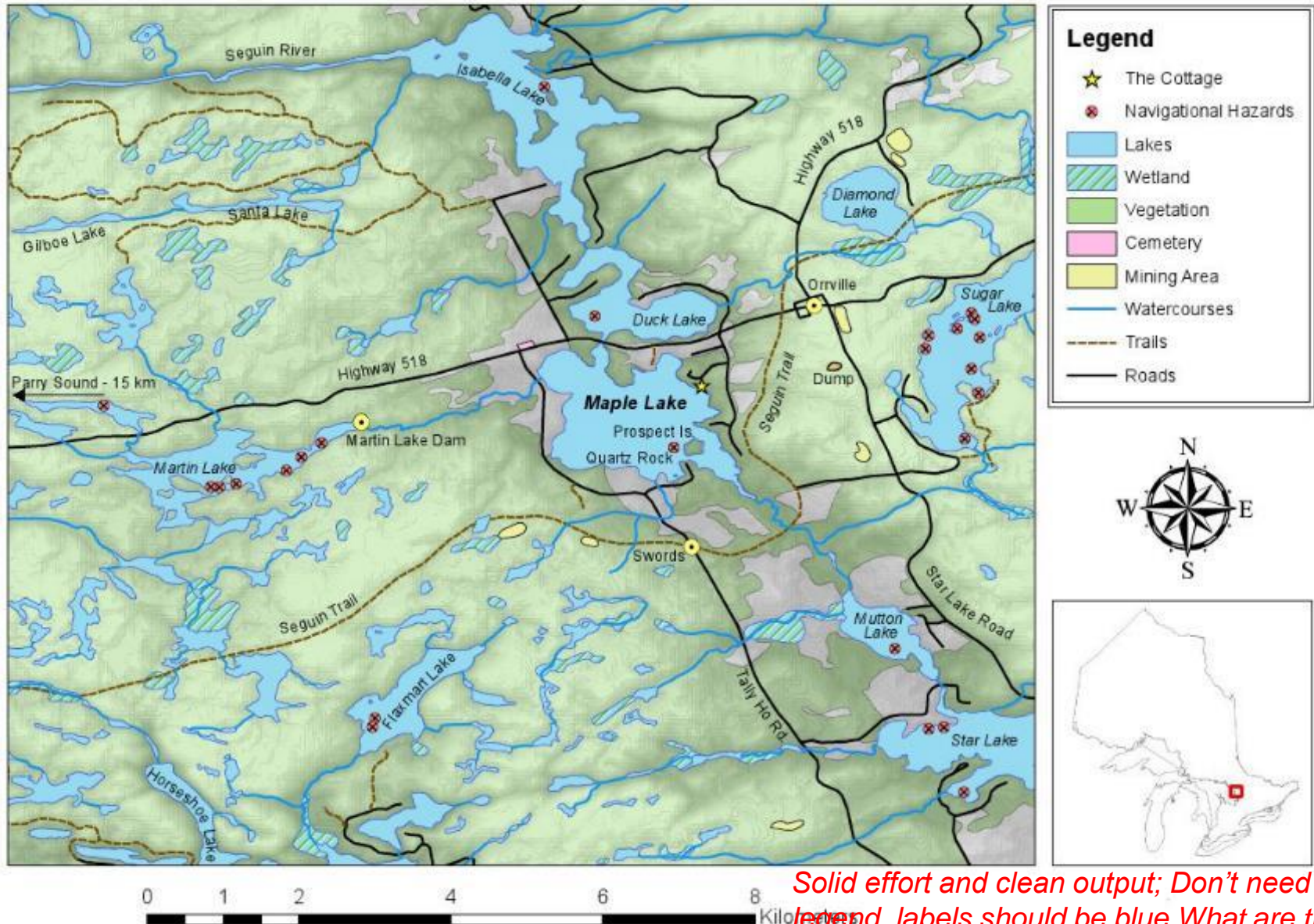


Interesting theme – good colours for cables, water depths and countries

B

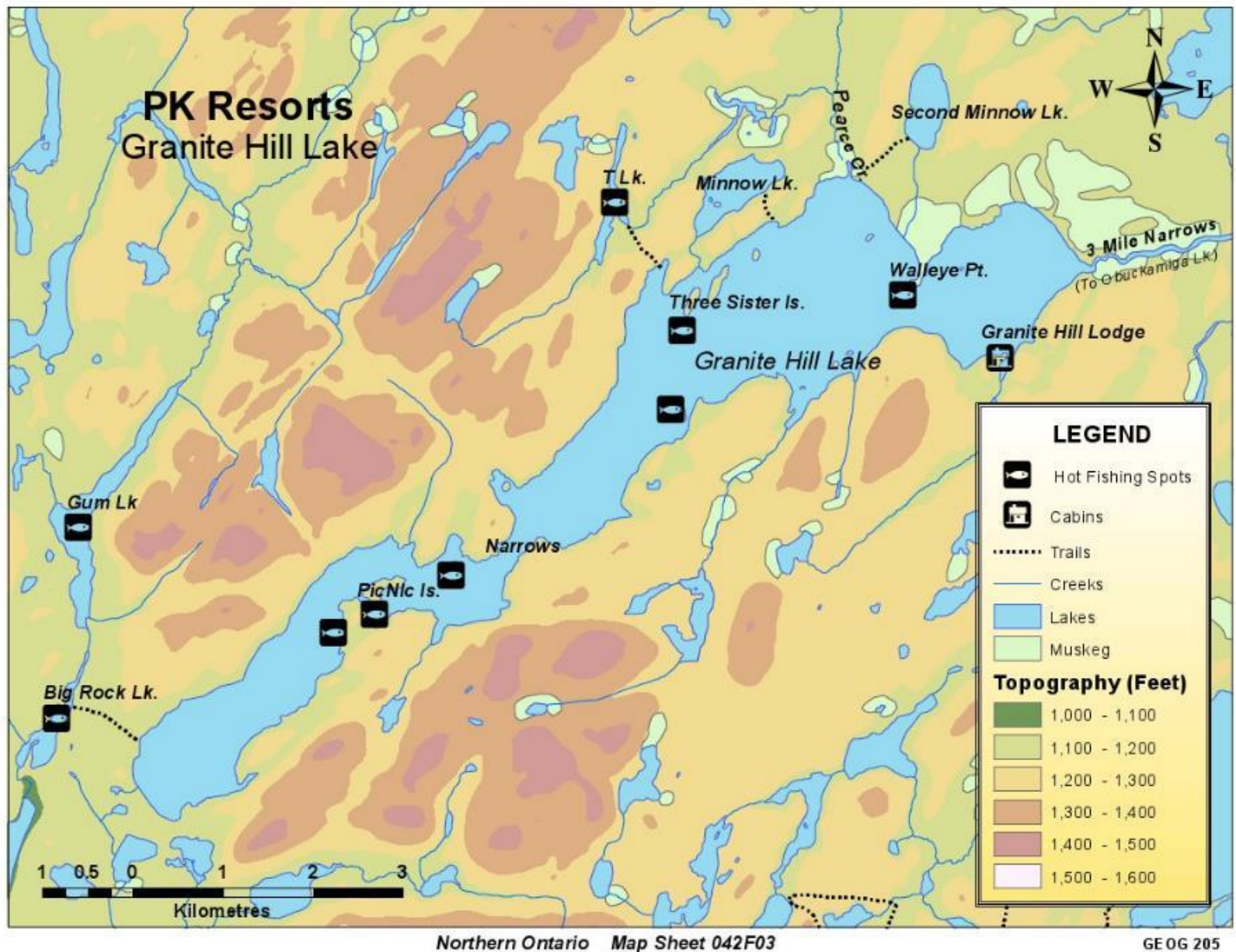
Topographic maps

MAPLE LAKE AND THE SURROUNDING AREA



Solid effort and clean output; Don't need Lakes in legend, labels should be blue What are the gray areas, where is the cemetery ? wetland symbol !

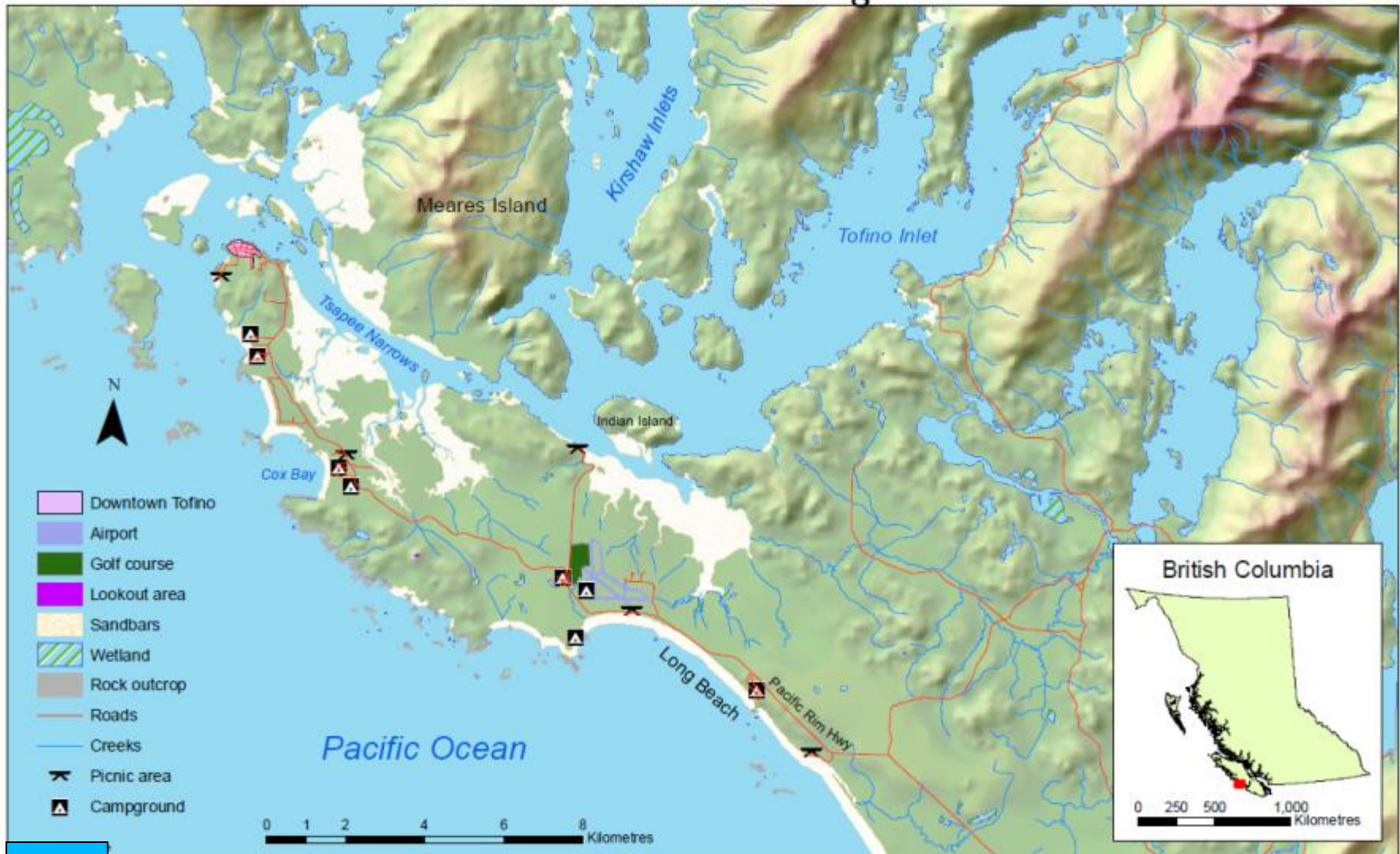
B



*This could use Hillshading to show relief better, but nice round values and good colours for tints
All water label should be in blue; nice simple scale bar; lakes in legend is optional;
Maybe box title to make it stand out more; good point symbols; white for highest elevation ?*

A

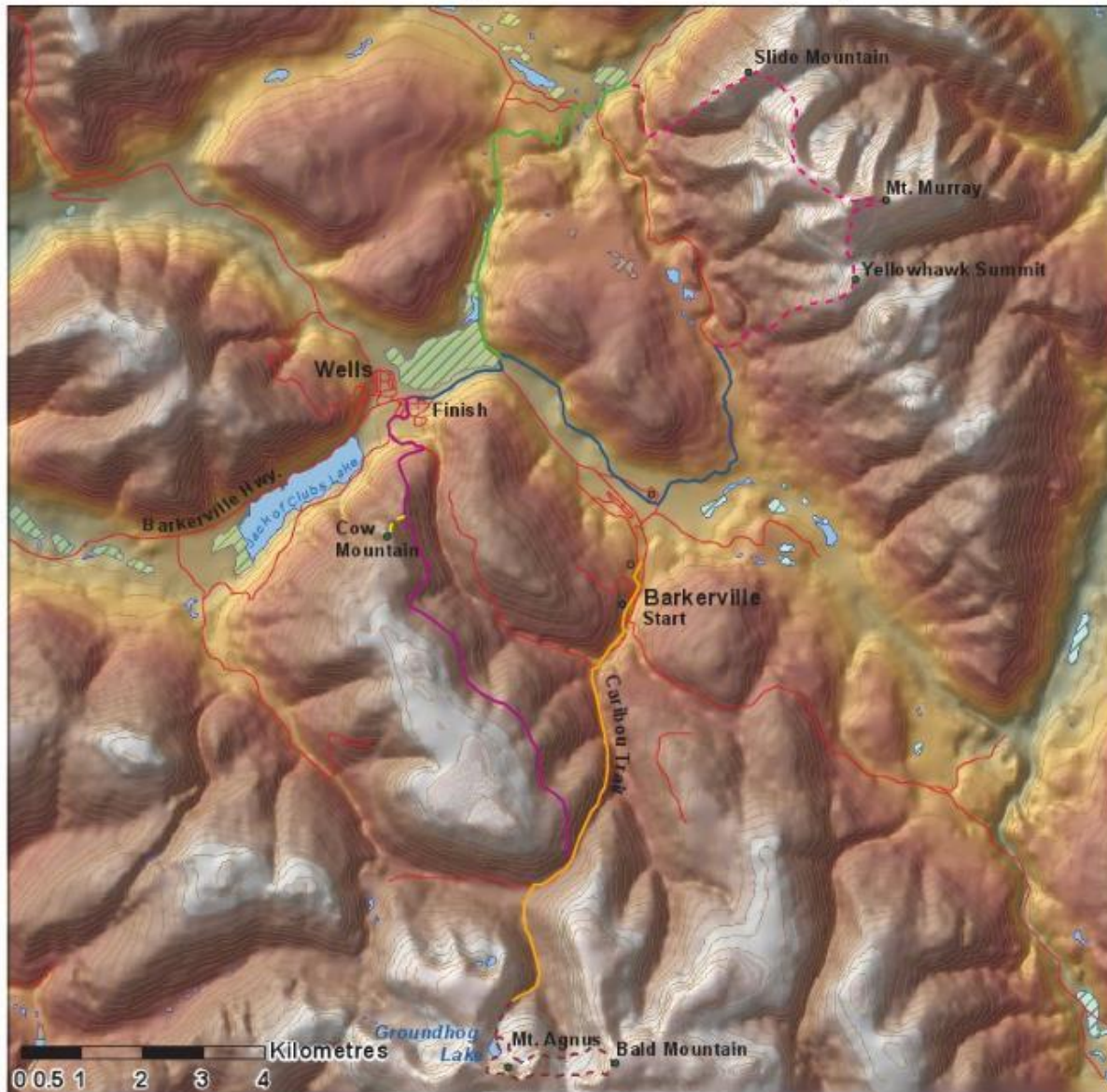
Tofino and the Surrounding Area



*Nice balance, good symbols (apart from the wetlands!)
Tofino needs a label, not just in legend– locator map a bit too much*

B

7 Summits Challenge Route 2010 (Bakerville/Wells)

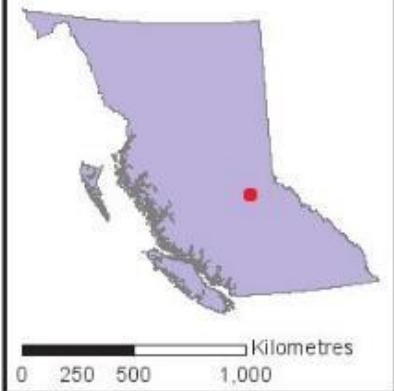


Legend

- Campgrounds
- Mountain Summits
- Barkerville
- Bike 1
- - - Hike 1
- Bike 2
- - - Bike 2 Cont.
- - - Hike 2
- Hike 3
- Bike 4
- Bike 5
- Roads
- Wetland

Note: This route is approximate as many "trails" were unmarked.

BC, Canada

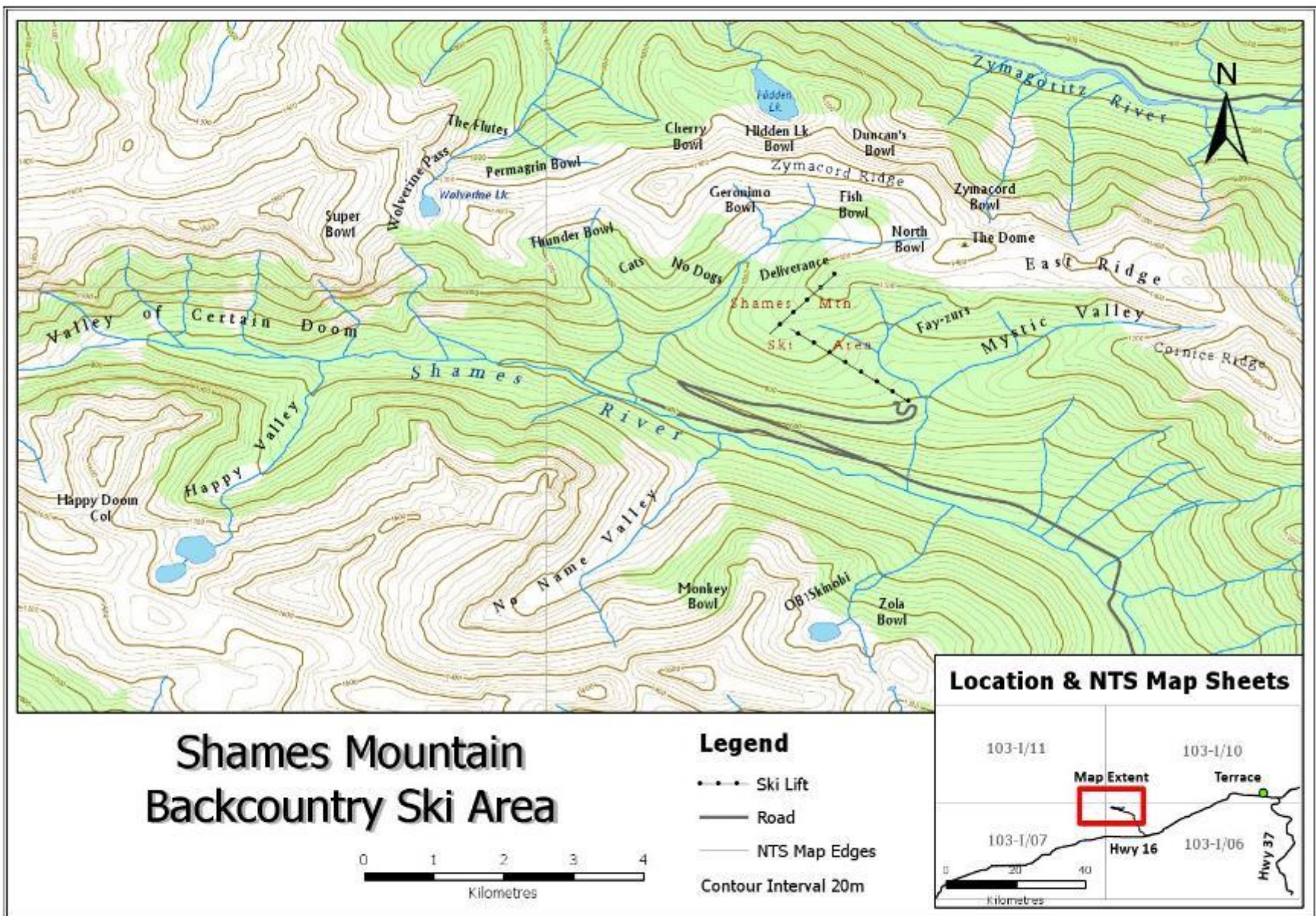


Data Source:
Collected from www.geogratis.com
and <http://www.whitegold.ca/biking.html>

UNBC
CIT LAB

Great idea but Tints much too heavy. Wetlands again; typo in title
Colours for trails lost and low contrast; silly scale bar design

B



*Solid effort, but could use hillshading, and contour labels
Possibly the data are not projected – stretched E-W; good name placements*

A

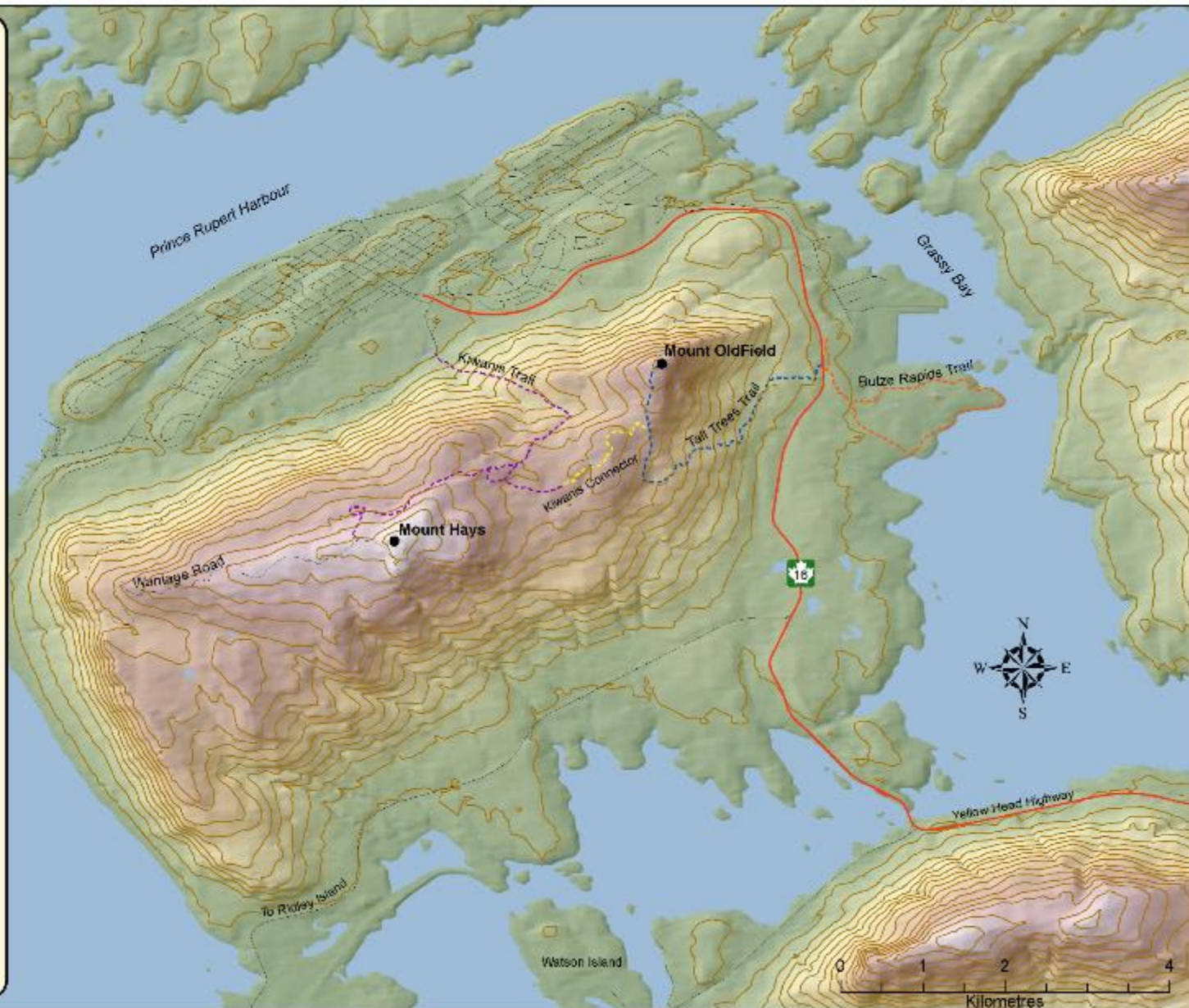
Kaien Island Trails Prince Rupert, B.C.

The small coastal city of Prince Rupert is home to some of the best trails for beginner and experienced hikers. Prince Rupert is situated on Kaien Island just below the Alaskan Panhandle in North West British Columbia. Kaien Island is dominated by two mountains, Mount Hays and Mount Oldfield. These mountains give Prince Rupert a variety of topography for hikers to explore.



Butze Rapids is a wonderful beginners hike and introduction to the coastal waters of Kaien Island. The hike is an easy walk through 1.8km of looping old growth forest. You can head to the lookout to view the rapids or take a rest at Grassy Bay and take in the coast.

Tall Trees Trail and the Kiwanis Trail are scenic hikes for more experienced hikers. It is recommended to do this trail when rain has been scarce as the terrain can become quite difficult. Once at the top a stunning view of Prince Rupert from atop of either Mount Oldfield, or if you are willing to do a bit of bushwalking, Mount Hays.



Visually appealing – great tints and trails; but can barely see P. Rupert; scale bar better in water

A

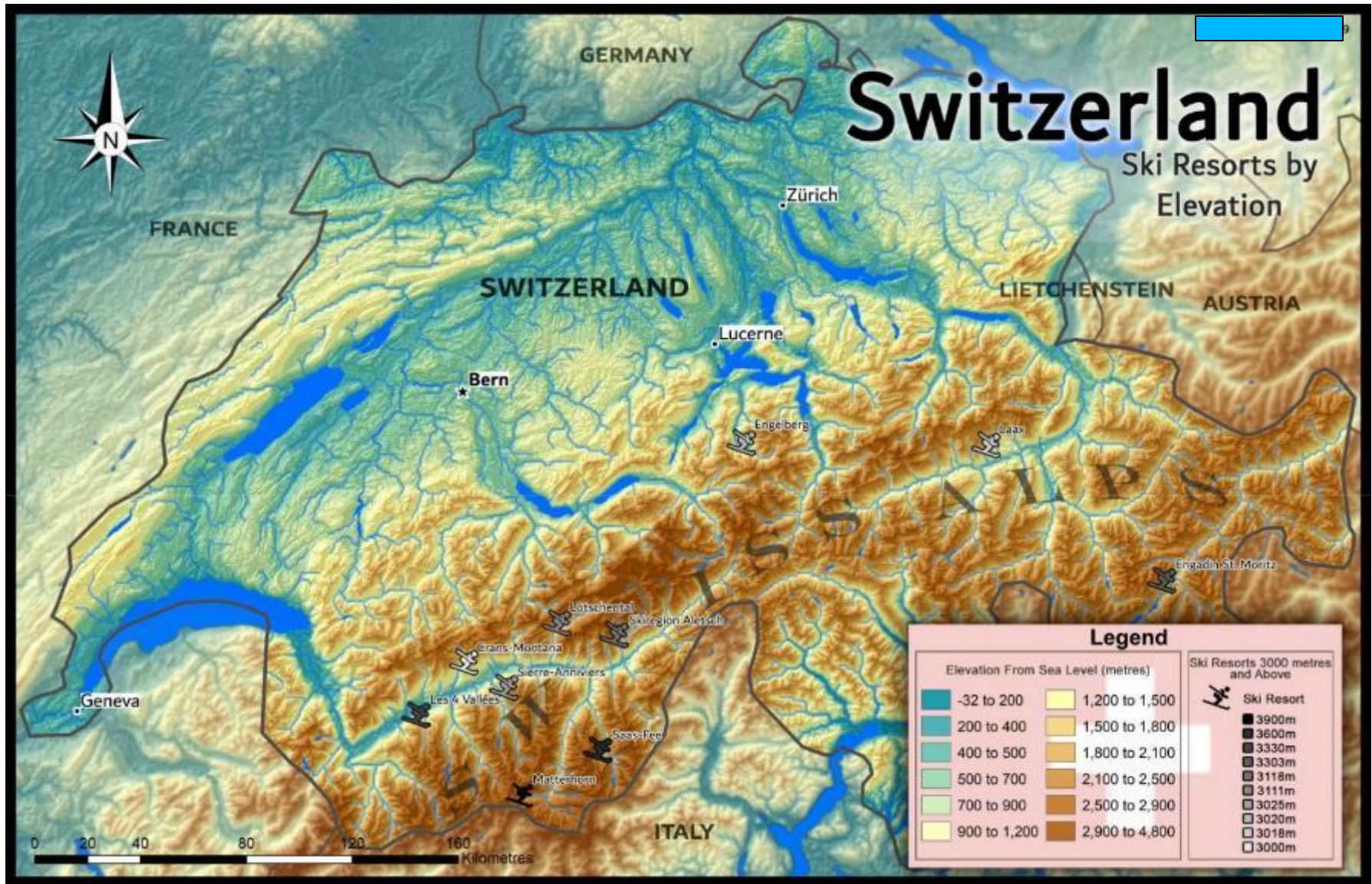


Overall excellent, could be lightened a bit for legibility. What's with the scale bar ?

[illegible]

A both: addition of hillshade to NTDB data, and excellent labelling

A



Great idea – found ski / topo data for Europe / Alps – one minor typo – can you find it ?

Vegetation Resource Inventory (VRI) data

B: Lettering is messy (overuse of halo);
legend column needs a box to hold it together

Potential Moose Habitat in The Naltesby Lake Forest Region



Canada summary

Municipal data: often available for cities / towns

Municipalities and provinces: <http://canadiangis.com/data.php>

Provincial 1:20,000 mapping (Bold = free download)

BC, AB, **MB**, ON (south = 50°N), QC (south), **NS**, NB, PEI

Canada (NTDB) : <http://maps.canada.ca/czs/index-en.html>

Other countries: highly variable: small scale: <http://www.diva-gis.org/Data>

copy of BC Roads here:

<https://arc.gis.unbc.ca/portal/home/item.html?id=69c263e9f07c4766b755f650574ab728>

Major roads only (for faster loading)

<https://arc.gis.unbc.ca/portal/home/item.html?id=473f96ebe3bc4e229a73867f0ad11580>