

GEOG 204

LECTURE 8

1

Census Data

- Statistics Canada conducts the Census of Population to provide a snapshot of Canada one specific day
- Every five years
 - 2 questionnaires
 - Short form (100% of the population)
 - Longform (20% of the population)
 - Mandatory (except 2011)
 - Random sample

2

2

Census Data

- The primary source of socioeconomic data
 - Population and dwelling counts
 - Families, households and marital status
 - Income
 - Indigenous peoples
 - Housing
 - Mobility and migration
 - Education
 - Labour
 -

3

3

Census Data

- Used by researchers across the country
 - Housing and real-estate
 - Social economic conditions
 - Immigrants
 - Minorities
 - Rural communities
 - Language
 - Public health
 - Economic outcomes of post secondary education
 - Commerce

4

4

Working with Census Data

- An important point is to determine the area units meaningful to your research
- Estimates for small areas
 - Higher risk of suppression due to confidentiality concerns
 - More sensitive to
 - rounding
 - non-responses
 - Leads to greater margin of error in small area estimates

9/4/20XX

Presentation Title

7

7

Pros & Cons of Census Small Areas

Unit	PROs	CONS
<i>Block Face</i>	<ul style="list-style-type: none"> ■ very high resolution ■ entire country covered 	<ul style="list-style-type: none"> ■ households and population counts only
<i>Enumeration Areas</i>	<ul style="list-style-type: none"> ■ fairly high resolution ■ all Census questions ■ entire country covered 	<ul style="list-style-type: none"> ■ inconsistent boundaries ■ higher risk of data suppression, influence of rounding
<i>Dissemination Areas</i>	<ul style="list-style-type: none"> ■ consistent boundaries ■ fairly high resolution ■ all Census questions ■ entire country covered 	<ul style="list-style-type: none"> ■ risk of data suppression ■ influence of rounding
<i>Census Tracts</i>	<ul style="list-style-type: none"> ■ consistent boundaries ■ all Census questions ■ lower risk of data suppression 	<ul style="list-style-type: none"> ■ lowest resolution ■ potential for boundaries to become "outdated" ■ only available for larger centres

Presentation Title

8

8

2011 Census Long Form Elimination

- “Long Form” Census form had been around a long time (the 8 question short form was introduced in 1971)
- Sections:
 - Demography; Labour markets & income; Transportation; Education; Language; Activity Limitations; Housing; Citizenship and immigration; Ethnicity/culture

Presentation Title

9

9

2011 Census Long Form Elimination

- Mandatory – fill it out or else fine or jail time!
- Up to 2006, sent to one in five households (20%) “random” sample
 - 2016 – now sent to one in four (25%) households
- 2010 – Federal government decided to cancel it
 - Replaced with a **voluntary** household survey (National Household Survey)
- Present government reinstated it in time for 2016 Census

Presentation Title

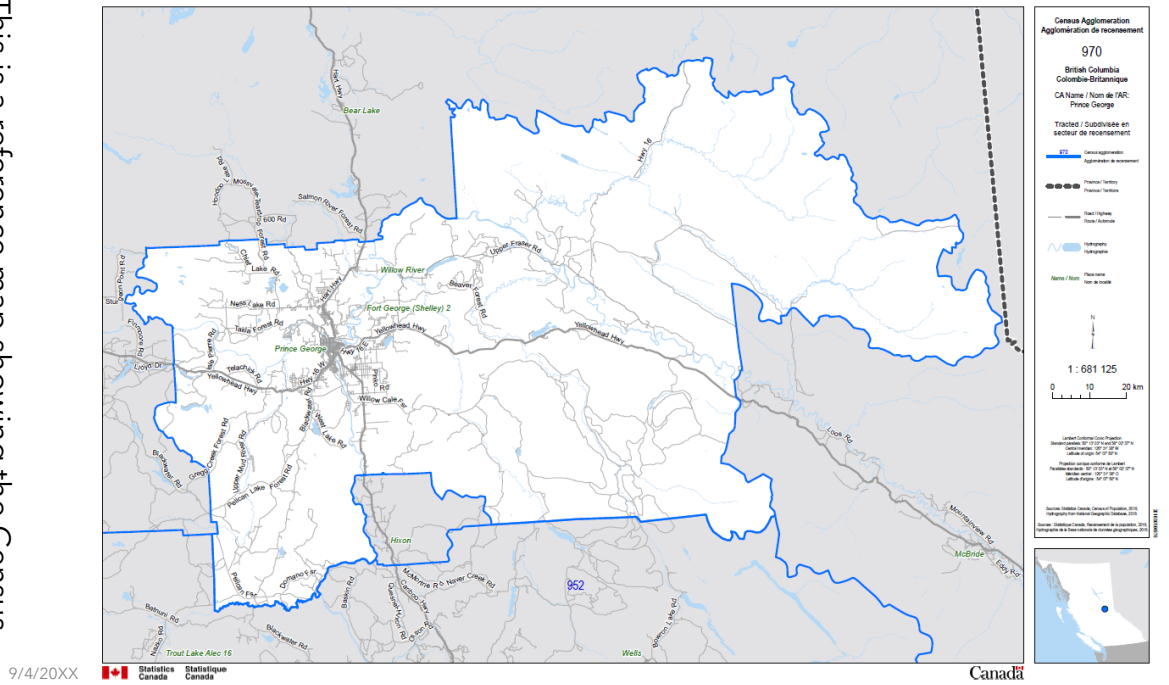
10

10

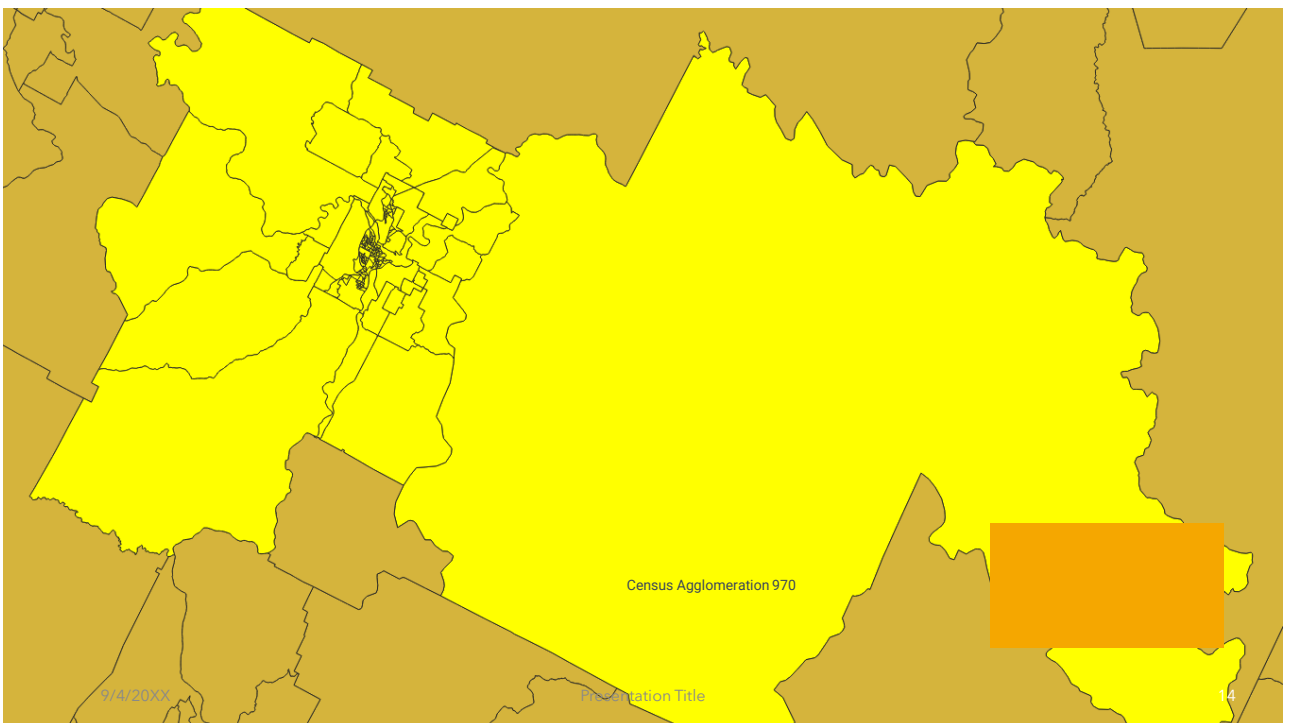
12



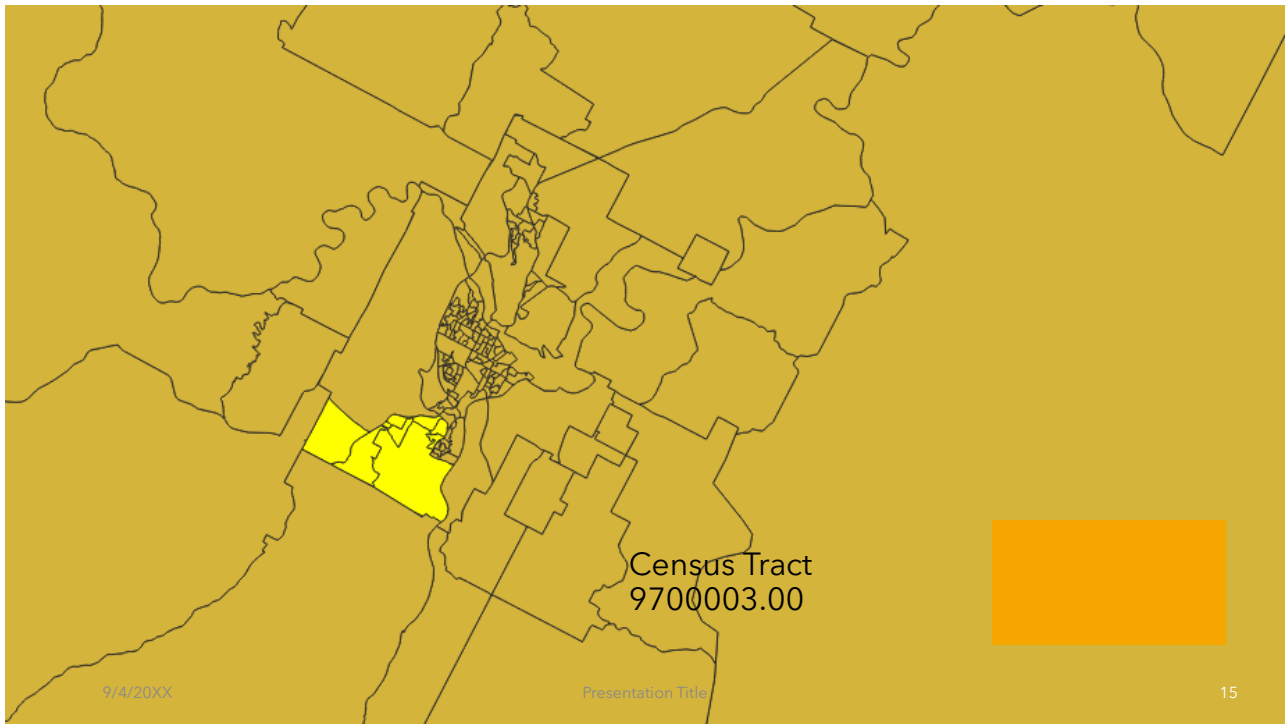
This is a reference map showing the Census Agglomeration for Prince George.



13



14

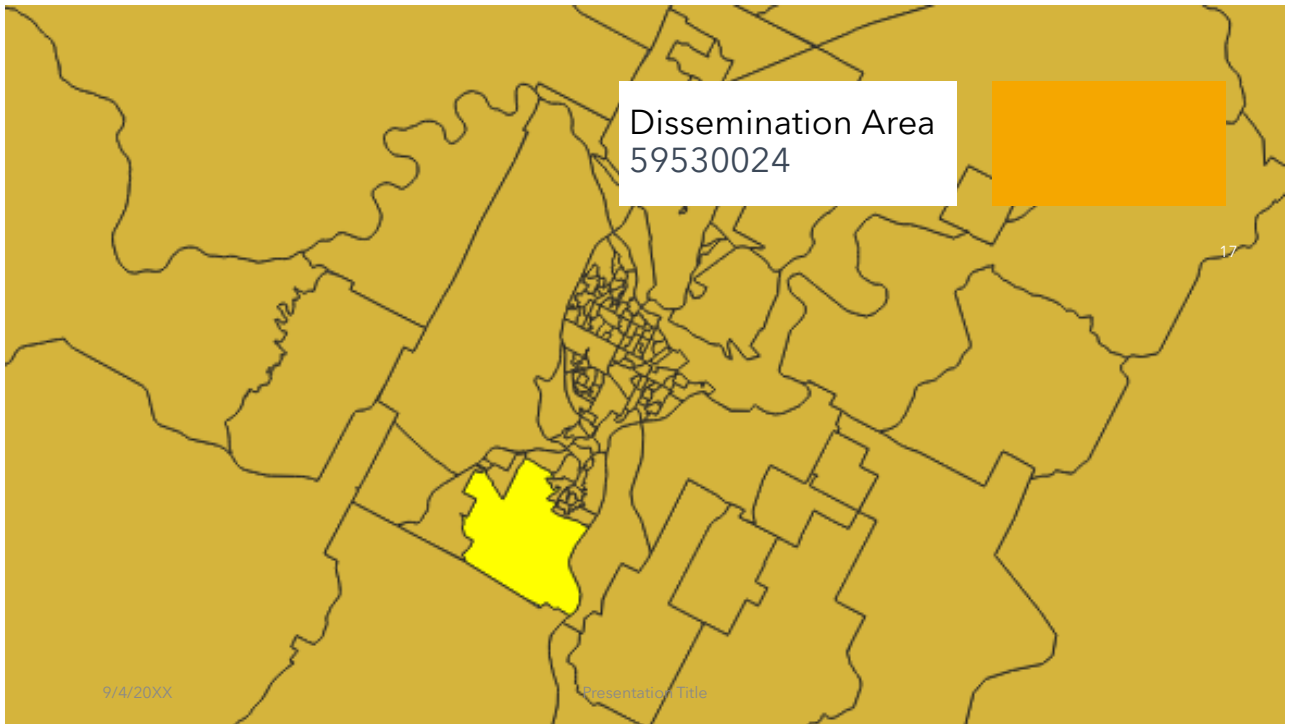


15

DAUID	PRUID	CDUID	CDNAME	CSDUID	CSDNAME	ERUID	ERNAME	CMAUID	CMAPUID	CMA NAME	CTUID	CTNAME	ADAUID
59530236	59	5953	Fraser-Fort George	5953023	Prince George	5950	Cariboo	970	59970	Prince George	9700001	1	59530014
59530101	59	5953	Fraser-Fort George	5953023	Prince George	5950	Cariboo	970	59970	Prince George	9700002	2	59530016
59530100	59	5953	Fraser-Fort George	5953023	Prince George	5950	Cariboo	970	59970	Prince George	9700002	2	59530016
59530102	59	5953	Fraser-Fort George	5953023	Prince George	5950	Cariboo	970	59970	Prince George	9700002	2	59530016
59530103	59	5953	Fraser-Fort George	5953023	Prince George	5950	Cariboo	970	59970	Prince George	9700002	2	59530016
59530104	59	5953	Fraser-Fort George	5953023	Prince George	5950	Cariboo	970	59970	Prince George	9700002	2	59530016
59530105	59	5953	Fraser-Fort George	5953023	Prince George	5950	Cariboo	970	59970	Prince George	9700002	2	59530016
59530106	59	5953	Fraser-Fort George	5953023	Prince George	5950	Cariboo	970	59970	Prince George	9700002	2	59530016
59530107	59	5953	Fraser-Fort George	5953023	Prince George	5950	Cariboo	970	59970	Prince George	9700002	2	59530016
59530108	59	5953	Fraser-Fort George	5953023	Prince George	5950	Cariboo	970	59970	Prince George	9700002	2	59530016
59530109	59	5953	Fraser-Fort George	5953023	Prince George	5950	Cariboo	970	59970	Prince George	9700002	2	59530016
59530110	59	5953	Fraser-Fort George	5953023	Prince George	5950	Cariboo	970	59970	Prince George	9700002	2	59530016
59530221	59	5953	Fraser-Fort George	5953023	Prince George	5950	Cariboo	970	59970	Prince George	9700003	3	59530014
59530222	59	5953	Fraser-Fort George	5953023	Prince George	5950	Cariboo	970	59970	Prince George	9700003	3	59530014
59530223	59	5953	Fraser-Fort George	5953023	Prince George	5950	Cariboo	970	59970	Prince George	9700003	3	59530014
59530224	59	5953	Fraser-Fort George	5953023	Prince George	5950	Cariboo	970	59970	Prince George	9700003	3	59530014
59530225	59	5953	Fraser-Fort George	5953023	Prince George	5950	Cariboo	970	59970	Prince George	9700003	3	59530014
59530226	59	5953	Fraser-Fort George	5953023	Prince George	5950	Cariboo	970	59970	Prince George	9700003	3	59530014
59530227	59	5953	Fraser-Fort George	5953023	Prince George	5950	Cariboo	970	59970	Prince George	9700003	3	59530014
59530228	59	5953	Fraser-Fort George	5953023	Prince George	5950	Cariboo	970	59970	Prince George	9700003	3	59530014
59530217	59	5953	Fraser-Fort George	5953023	Prince George	5950	Cariboo	970	59970	Prince George	9700004	4	59530007
59530218	59	5953	Fraser-Fort George	5953023	Prince George	5950	Cariboo	970	59970	Prince George	9700004	4	59530007
59530219	59	5953	Fraser-Fort George	5953023	Prince George	5950	Cariboo	970	59970	Prince George	9700004	4	59530007
59530220	59	5953	Fraser-Fort George	5953023	Prince George	5950	Cariboo	970	59970	Prince George	9700004	4	59530007
59530086	59	5953	Fraser-Fort George	5953023	Prince George	5950	Cariboo	970	59970	Prince George	9700005	5	59530013
59530087	59	5953	Fraser-Fort George	5953023	Prince George	5950	Cariboo	970	59970	Prince George	9700005	5	59530013
59530088	59	5953	Fraser-Fort George	5953023	Prince George	5950	Cariboo	970	59970	Prince George	9700005	5	59530013
59530089	59	5953	Fraser-Fort George	5953023	Prince George	5950	Cariboo	970	59970	Prince George	9700005	5	59530013
59530090	59	5953	Fraser-Fort George	5953023	Prince George	5950	Cariboo	970	59970	Prince George	9700005	5	59530013
59530091	59	5953	Fraser-Fort George	5953023	Prince George	5950	Cariboo	970	59970	Prince George	9700005	5	59530013

Attributes
associated with the
Census Tract

16



17

Data Products and Boundary Files

- Data Products
 - <https://www12.statcan.gc.ca/census-recensement/2021/dp-pd/index-eng.cfm>
- You can download census boundary files from the Statistics Canada website

Presentation Title

18

18