

Mountain Cartography

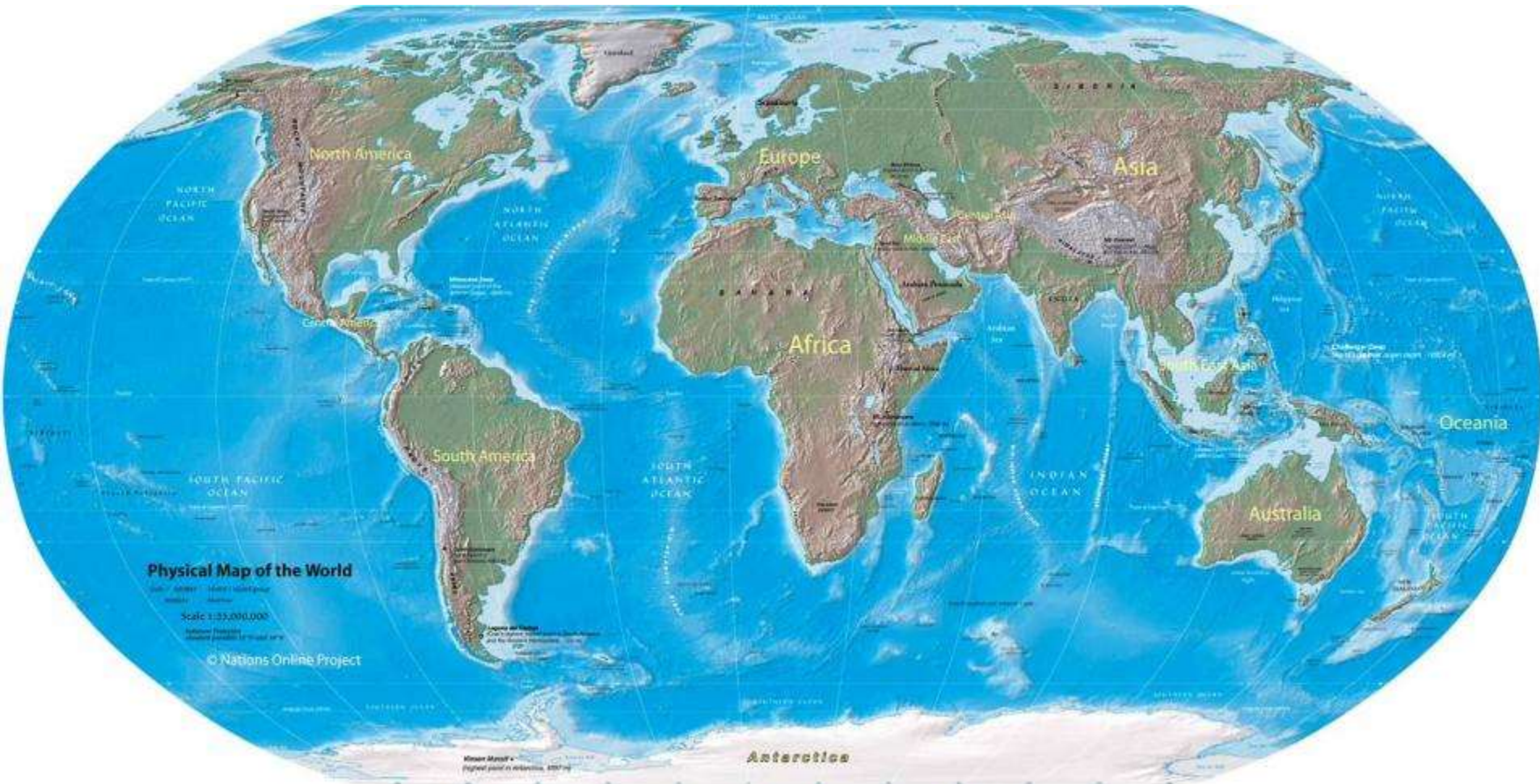


Heinrich Berann panorama , 1935



Is it a map ? 2.5D graphic

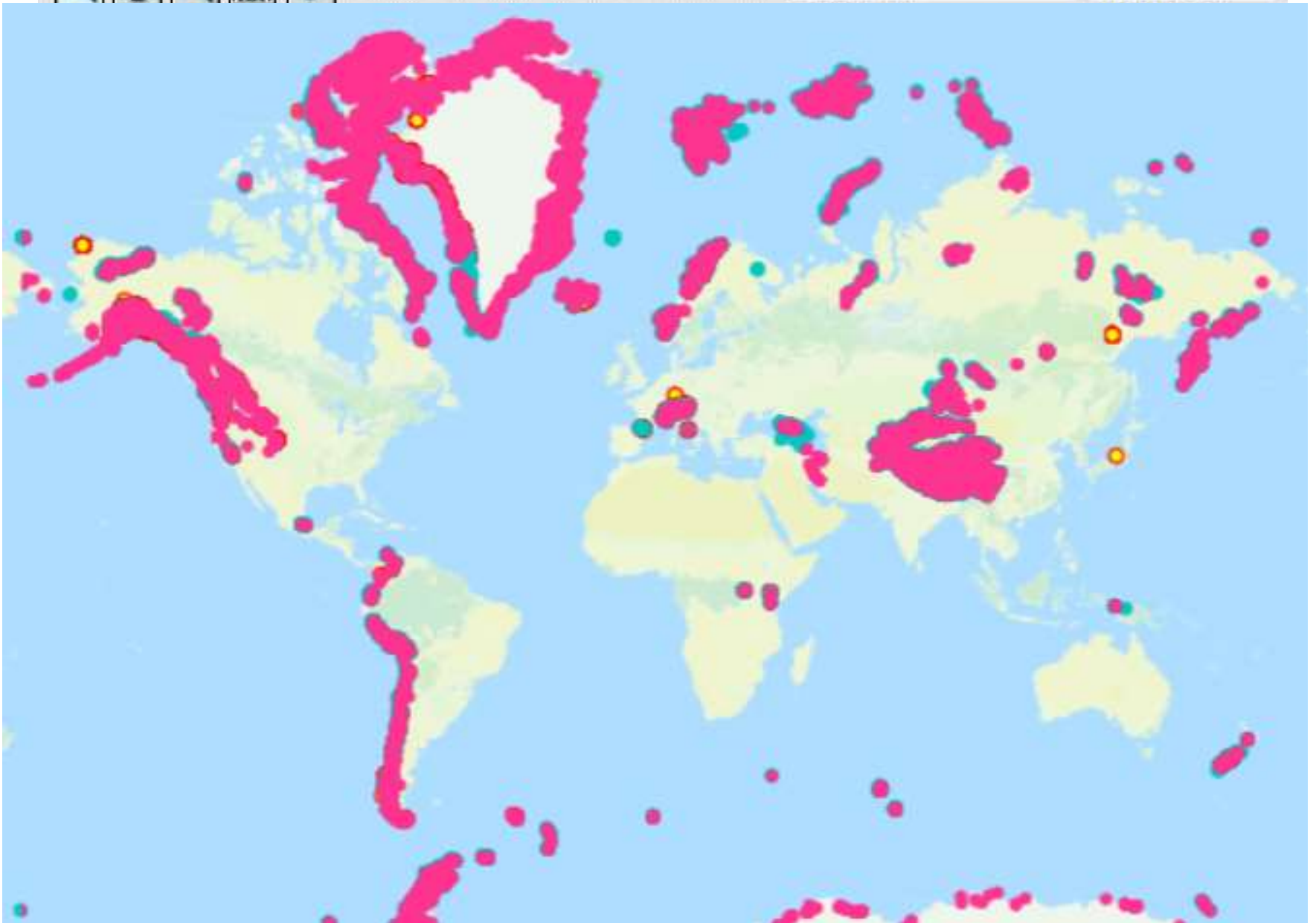
Mountains and cartography



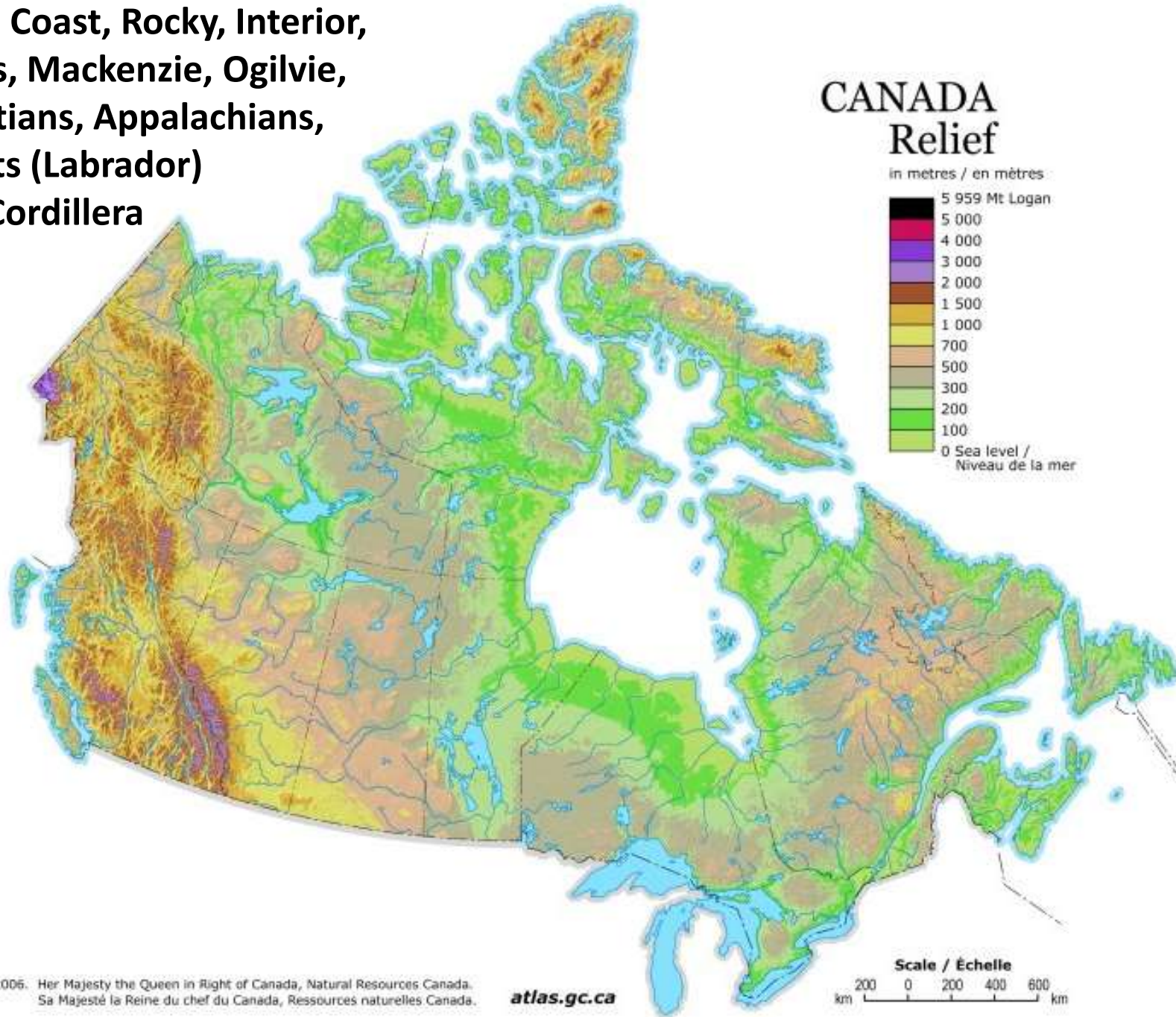
World glaciers

Zoom to...

Map Size...



**Insular, Coast, Rocky, Interior,
St. Elias, Mackenzie, Ogilvie,
Laurentians, Appalachians,
Torngats (Labrador)
Arctic Cordillera**



Brief history of mountain mapping

Early mapping pre-1875

Photo-topography in Canada 1875-1950

Federal mapping 1950-1995

Private sector 1995-present

Planetary mapping 1645-present

Brief history of mountain cartography: Early mapping pre-1875

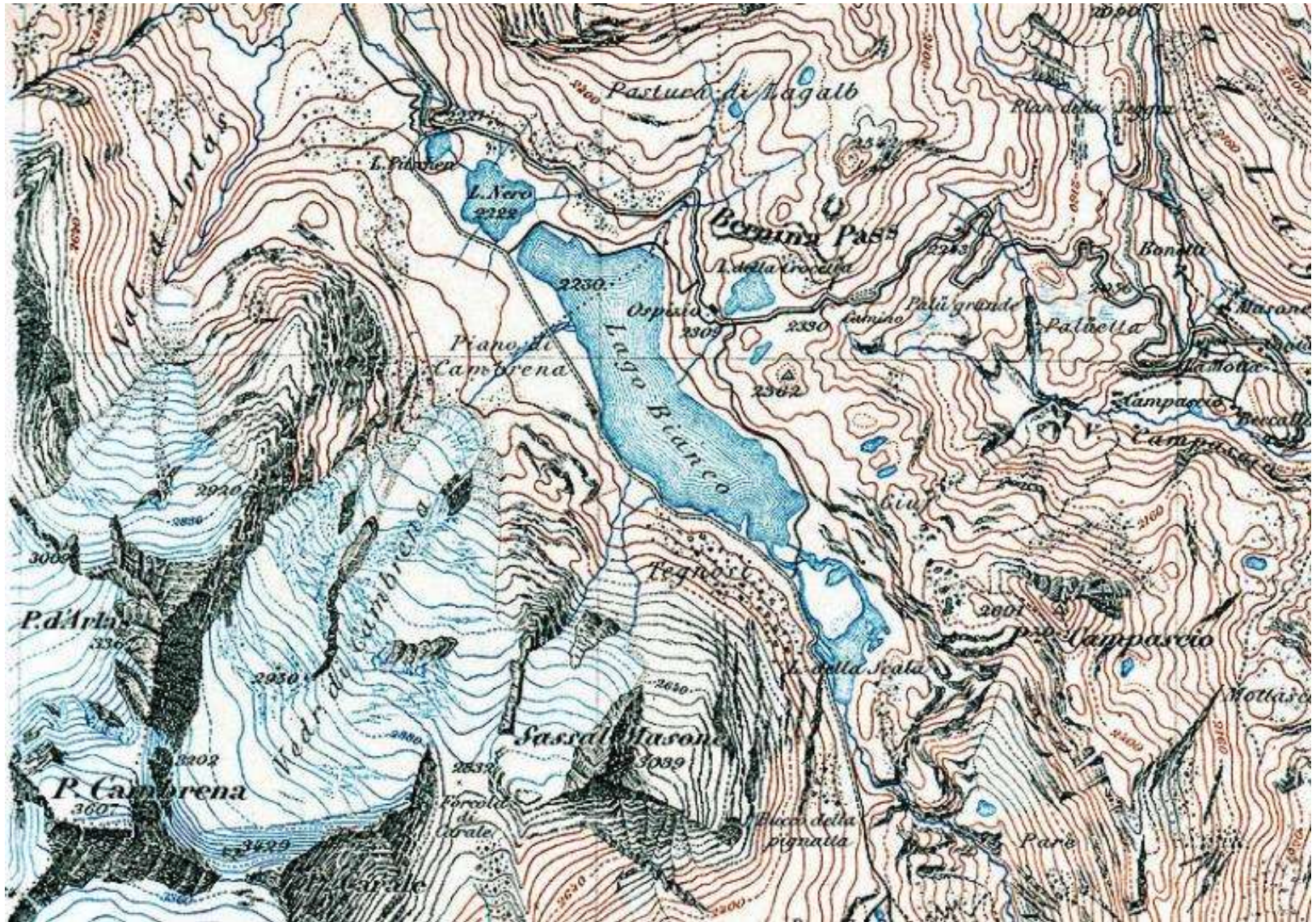


Switzerland, 1737: mountain mapping before surveying

Dufour hachure maps of Switzerland, 1845-65



Bernina Pass, Switzerland 1877

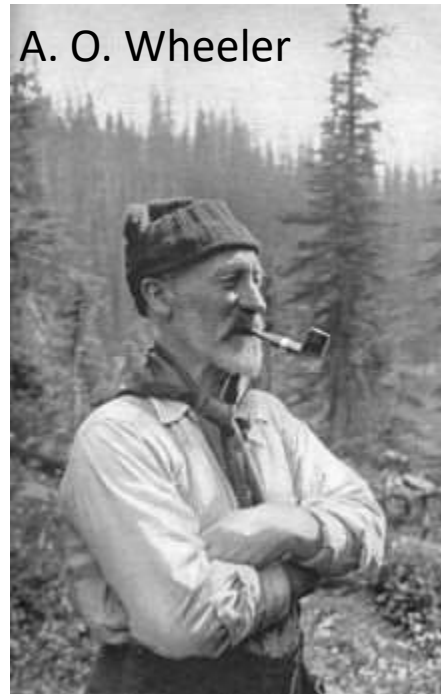


Canada (Selkirks) 1885, part of railway map



Early mapping: Photo-topography, 1885-1950

A technique introduced from France by the surveyor-general (Edouard Deville). Surveyors would place the camera on a mountain peak, point the lens at the horizon and take panoramic shots of the surrounding peaks. Surveyors took photos in the short summer season, then would complete their calculations and mapping in their offices during the winter. **This allowed larger areas to be surveyed more accurately**, in less time, and at one-third the cost of conventional surveying. It later gave way to aerial photogrammetry.



← Founder: Alpine Club of Canada



Early full colour map: Canadian Rocky Mountain

Mapped to entice climbers from Europe (20 maps in the series, Banff to Lake Louise)



Figure 3: Forty-Mile Creek 1890. Topographical Surveys Branch, Department of the Interior, Ottawa. Triangulation by W.S. Drewry, D.L.S. Topography by J.J. McArthur, D.L.S.

Mapping before aerial photography: Selkirk Range, 1906 (A.O. Wheeler)

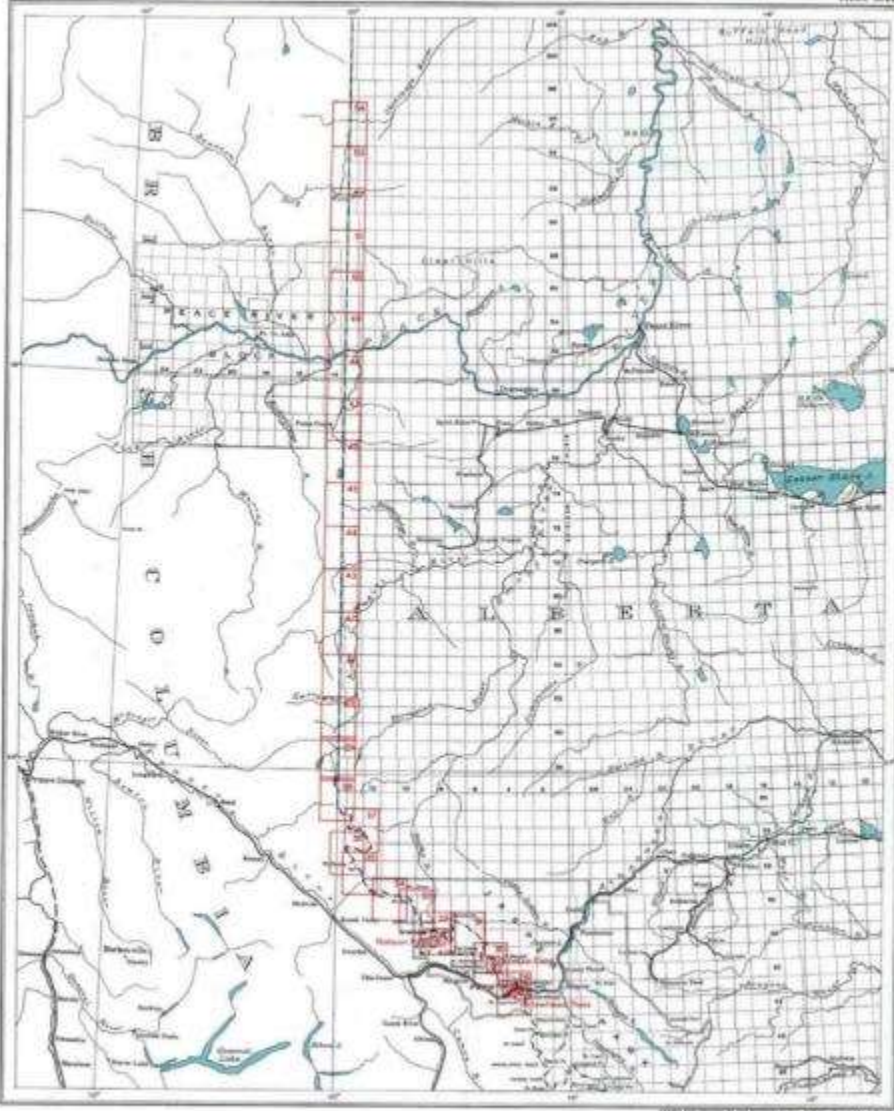
UNBC special collections, contours 100'



BC-AB boundary commission 1913-21

INTERPROVINCIAL BOUNDARY COMMISSION
BOUNDARY BETWEEN ALBERTA AND BRITISH COLUMBIA

INDEX SHEET

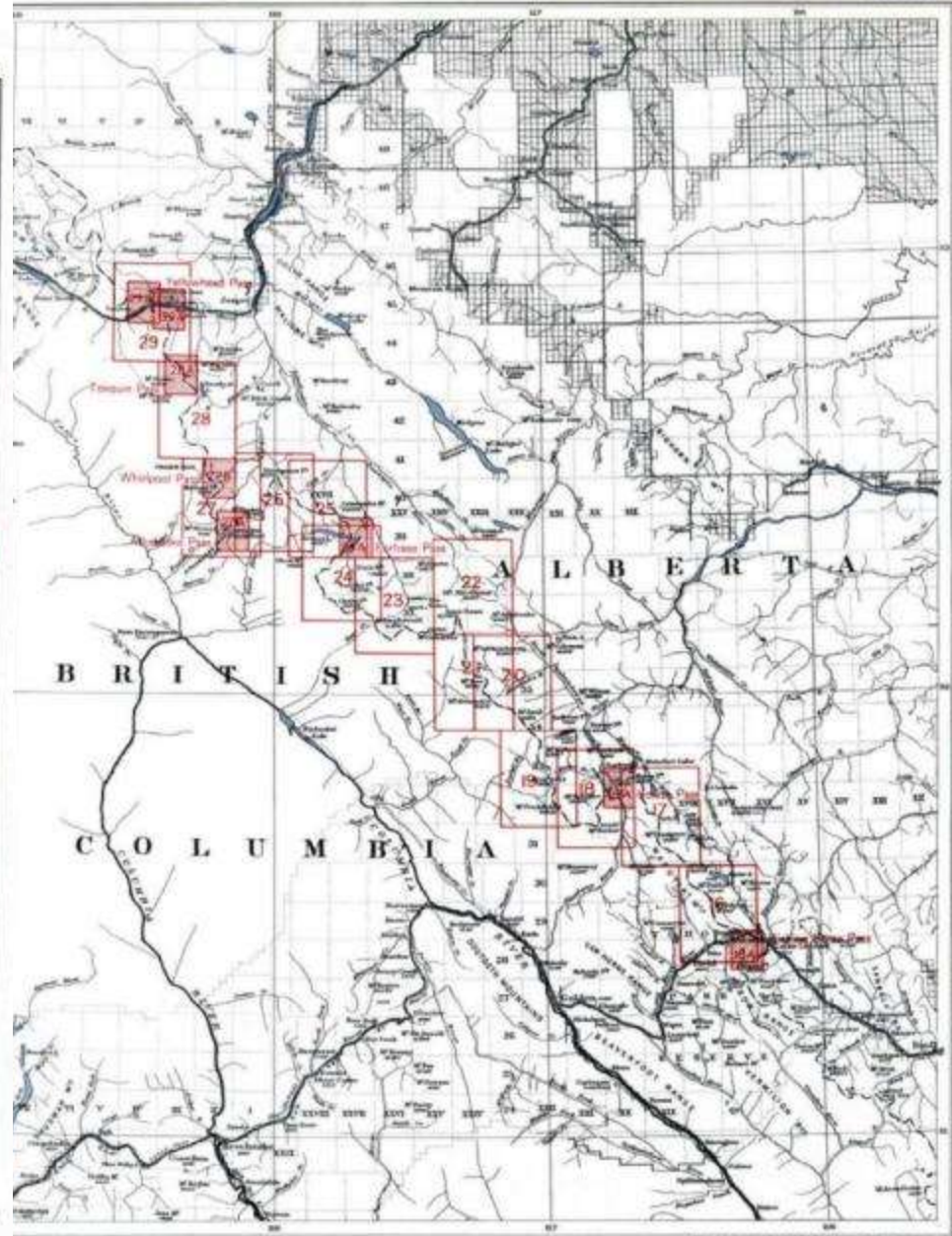


Scale, 1:625,000 or 1 inch to 25 Miles
 The numbers and outlines of the sheets are printed in red.

MAP COLLECTION
 UNIVERSITY OF ALBERTA
 EDMONTON, ALBERTA
 CANADA

INTERPROVINCIAL BOUNDARY COMMISSION
BOUNDARY BETWEEN ALBERTA AND BRITISH COLUMBIA

INDEX SHEET

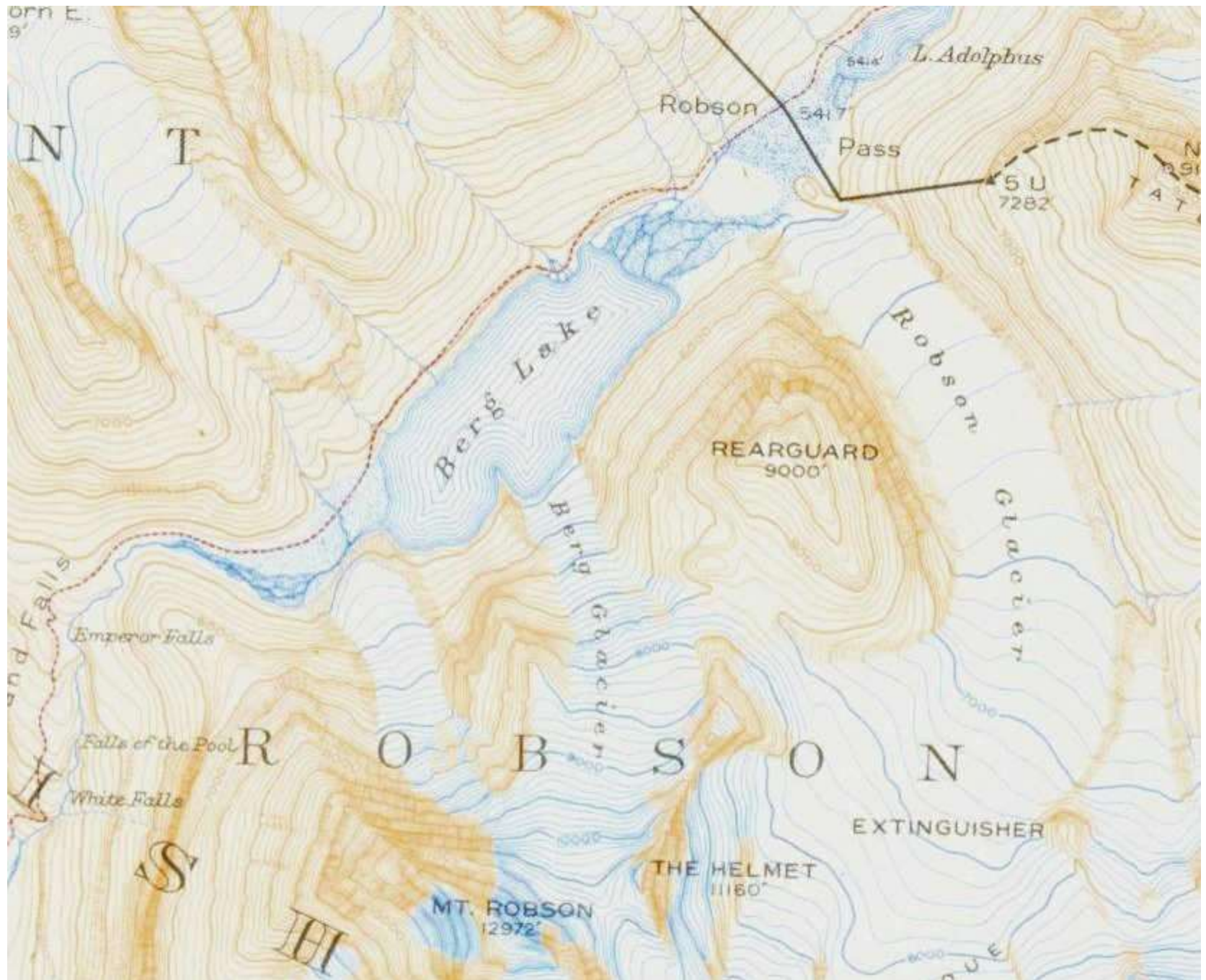


Scale, 1:792,000 or 1 inch to 32 1/2 Miles

The numbers and outlines of the sheets are indicated in red.

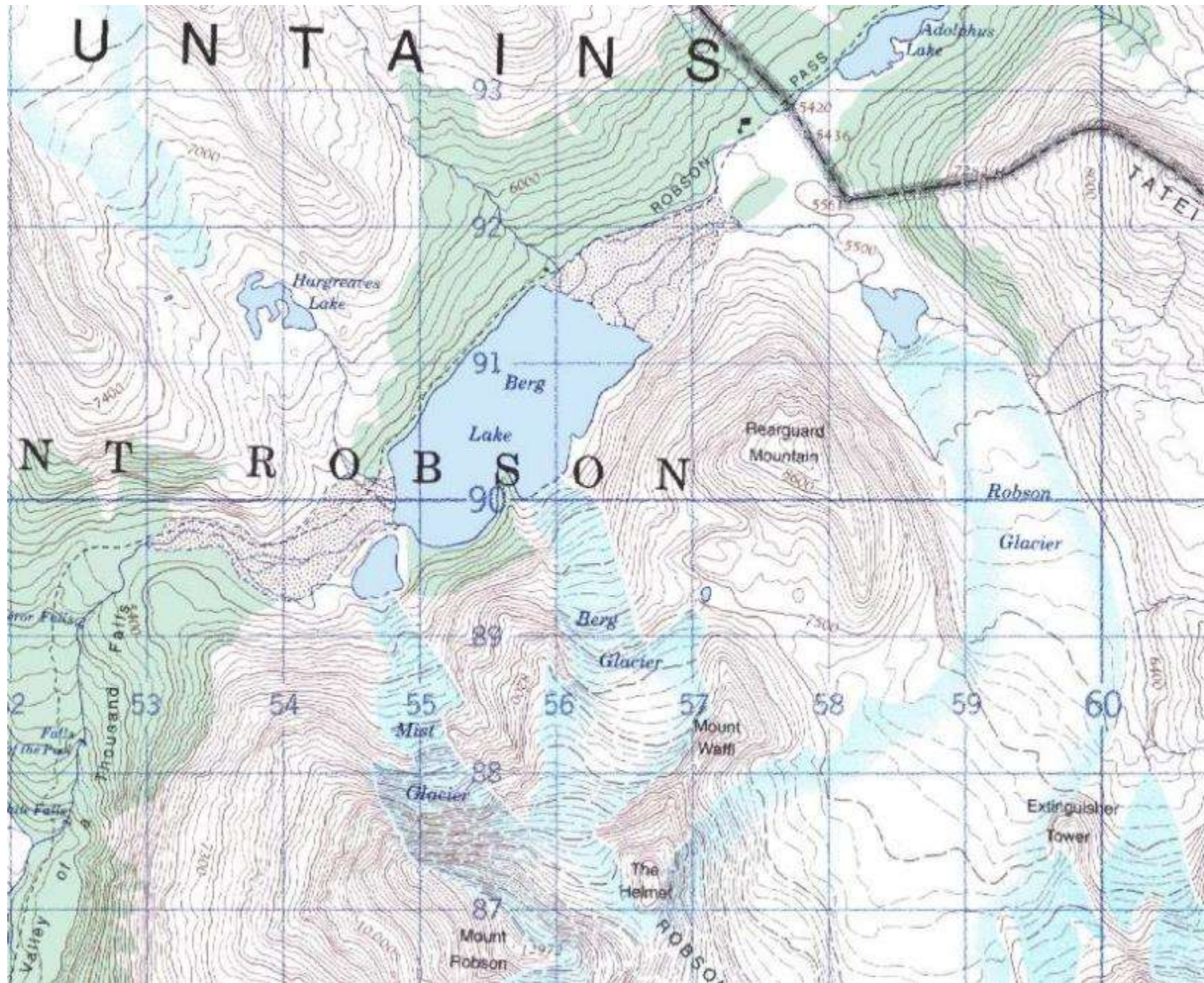
MAP COLLECTION
 UNIVERSITY OF ALBERTA
 EDMONTON, ALBERTA
 CANADA

sample map from AB-BC boundary commission map series: Mt. Robson, 1923



1975 NTS map sheet

Contour interval 100' (mountains) – now 40m, from aerial photography



Robson Glacier, Rearguard Mountain and Berg Glacier / Lake – August 2011

