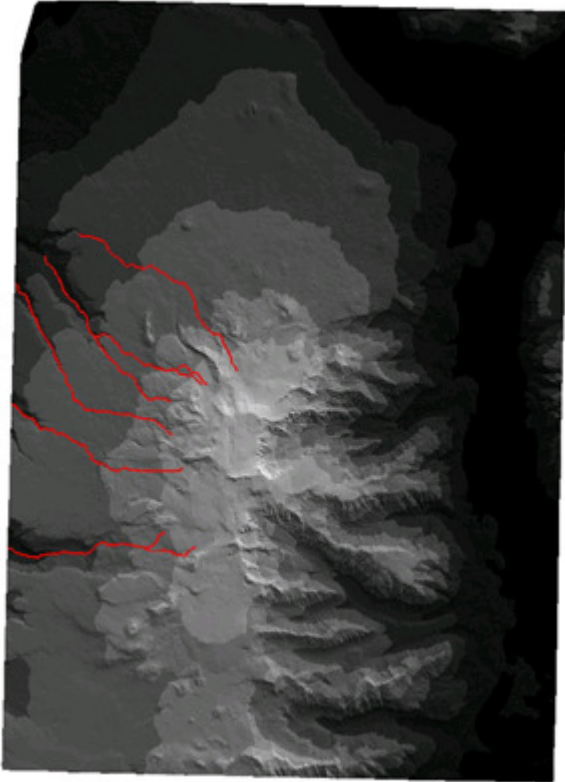
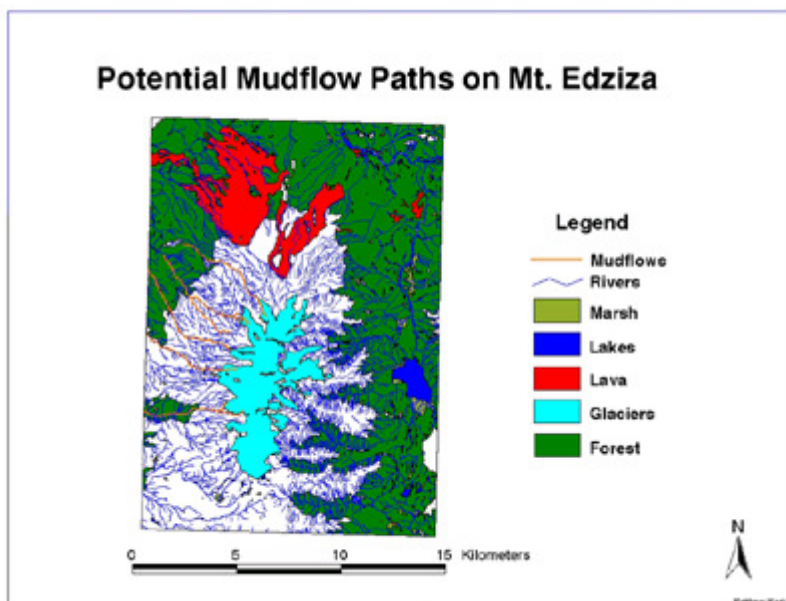


Potential Mud Flow Analysis on Mt. Edziza. Mathew Werk.

This project models potential mudflows on Mt. Edziza. Mt. Edziza is a volcano covered by a glacier located in Mt. Edziza Provincial Park in northwestern British Columbia. Given the potentially devastating effects of an eruption knowing areas that are most at risk would be a definite asset. Trim data was used in both an Arcview and Arc/Info environment. A dem was created and used to model a simplified watershed for the area. This watershed was used to single out potential mudflow paths on the mountain.



This image shows Mt. Edziza, the red lines are the potential mudflow paths.



This image shows the basic trim data for the region, along with the potential mudflow paths.